



Cat[®] 910M

COMPACT WHEEL LOADER

FEATURES:

- **Cat[®] Optimized Z-bar Loader Linkage** – The Cat Optimized Z-bar Loader linkage combines the digging efficiency of a traditional Z-bar with tool carrier capabilities for great performance and versatility. With parallel lift and high tilt forces throughout the working range you can safely and confidently handle loads with precise control.
- **Work Tools** – The 910M features the Cat exclusive, Performance Series Buckets, as well as high visibility pallet forks. These tools enhance productivity and are available with either an Integrated Toolcarrier (IT) or ISO (wide) coupler style. Legacy coupler tools such as brooms, grapple buckets, multi-purpose buckets and other work tools remain compatible.
- **Hydraulics and Controls** – State of the art electro-hydraulic system provides low effort, fine control with fast cycle times. All-in-one joystick helps keep eyes on the work. Operator can adjust machine responsiveness with the push of a button, which allows the operator to set up the machine exactly the way they want it based on the application.
- **Tuned Drivetrain** – Smooth shifting and powerful acceleration is matched with modulated hydrostatic braking in the inching/braking pedal, creating a rhythm for material moving. Creeper and electronic engine speed control makes broom and snow blower work easy. Operator tunes between smooth or aggressive shifting with the push of a button.
- **Cab** – All around visibility is further enhanced with the availability of a rearview camera. The deluxe cab ensures operator comfort with a heated, air suspension seat and easy to use controls. Available features such as Implement and Hystat Aggressiveness, Ride Control, Lift and Tilt Kickouts, Engine Speed Control and Rimpull Control allow the operator to customize the machine via a soft touch keypad.
- **Serviceability** – Extended service intervals and excellent service access make daily checks quick and easy allowing you to get to work sooner.
- **Efficiently Powerful** with its high full turn tipping loads, powerful breakout forces and increased engine power the M Series delivers a balanced solution for all customer applications.
- **Standard Fuel Savings Features** such as Eco Mode, On Demand Cooling Fan, and Auto Engine Idle Shutdown make the 910M both powerful and fuel efficient.

Specifications

Engine

| | | |
|----------------------|-----------------|---------------------|
| Engine Model | Cat C4.4 ACERT™ | |
| Maximum Gross Power: | | |
| Maximum Engine Speed | 2,350 RPM | |
| SAE J1995 | 76 kW | 102 hp |
| ISO 14396 | 74 kW | 100 hp |
| ISO 14396 (DIN) | 74 kW | 101 hp |
| Rated Net Power: | | |
| Rated Engine Speed | 2,200 RPM | |
| SAE J1349 | 72 kW | 96 hp |
| ISO 9249 | 72 kW | 97 hp |
| ISO 9249 (DIN) | 72 kW | 98 hp |
| Displacement | 4.4 L | 268 in ³ |
| Bore | 105 mm | 4.13 in |
| Stroke | 127 mm | 5.00 in |

Engine (continued)

| | | |
|-----------------------|---------|------------|
| Maximum Gross Torque: | | |
| SAE J1995 | 455 N-m | 336 lbf-ft |
| ISO 14396 | 450 N-m | 332 lbf-ft |
| Maximum Net Torque: | | |
| SAE J1349 | 441 N-m | 325 lbf-ft |
| ISO 9249 | 446 N-m | 329 lbf-ft |

- Engine meets U.S. EPA Tier 4 Final/EU Stage IV emission standards.
- Net power advertised is the power available at the flywheel plus front drive implement pump when the engine is equipped with fan, air cleaner, muffler and alternator.



910M Compact Wheel Loader

Buckets

| | | |
|-------------------------------------|------------------------|-------------------------|
| Bucket Capacities – General Purpose | 1.3-1.9 m ³ | 1.7-2.5 yd ³ |
|-------------------------------------|------------------------|-------------------------|

Steering

| | | |
|---|-------------|------------|
| Steering Articulation Angle (each direction) | 40 degrees | |
| Maximum Flow – Steering Pump | 66 L/min | 17 gal/min |
| Maximum Working Pressure – Steering Pump | 18 500 kPa | 2,683 psi |
| Steering Cycle Times (full left to full right): | | |
| At 2,350 RPM: 90 RPM steering wheel speed | 3.2 seconds | |
| Number of Steering Wheel Turns – full left to full right or full right to full left | 3.75 turns | |

Loader Hydraulic System

| | | |
|---|------------|------------|
| Maximum Flow – Implement Pump | 122 L/min | 32 gal/min |
| 3rd Function, Maximum Flow | 90 L/min | 24 gal/min |
| 4rd Function, Maximum Flow | 90 L/min | 24 gal/min |
| Maximum Working Pressure – Implement Pump | 23 500 kPa | 3,408 psi |
| Relief Pressure – Tilt Cylinder | 34 000 kPa | 4,931 psi |
| 3rd Function Maximum Working Pressure | 21 000 kPa | 3,046 psi |
| 4th Function Maximum Working Pressure | 21 000 kPa | 3,046 psi |

Hydraulic Cycle Times:

| | | |
|---|--------------|--|
| Raise (ground level to maximum lift) | 5.2 seconds | |
| Dump (at maximum reach) | 1.4 seconds | |
| Rack Back | 2.2 seconds | |
| Float Down (maximum lift to ground level) | 3.7 seconds | |
| Total Cycle Time | 12.5 seconds | |

Service Refill Capacities

| | | |
|-----------------------------------|---------|----------|
| Fuel Tank | 154.0 L | 40.7 gal |
| Cooling System | 21.5 L | 5.7 gal |
| Engine Crankcase | 8.8 L | 2.3 gal |
| Axles: | | |
| Front Center Differential | 7.5 L | 2.0 gal |
| Rear Center Differential | 7.5 L | 2.0 gal |
| Hydraulic System (including tank) | 98.0 L | 25.9 gal |
| Hydraulic Tank | 55.0 L | 14.5 gal |
| Transmission | 3.4 L | 0.9 gal |
| Diesel Exhaust Fluid (DEF) Tank | 18.9 L | 5.0 gal |

- DEF used in Cat SCR systems must meet the requirements outlined in the International Organization for Standardization (ISO) standard 22241-1.

Transmission

| | | |
|---------------------------|---------|----------|
| Forward and Reverse: | | |
| Low Range, Speed Range 1* | 10 km/h | 6.3 mph |
| Low Range, Speed Range 2* | 20 km/h | 12.5 mph |
| High Range | 40 km/h | 25 mph |

*Creeper Control allows speed control from a stand still up to 10 km/h (6.3 mph). The Creeper Control will only work in Range 1.

Tires

| | | |
|------------------------|---------------------------------|--|
| Standard Size | 15.5-25 12PR | |
| Other Choices Include: | 15.5-R25 | |
| | 17.5-25 12PR | |
| | 17.5-25 12PR L2 | |
| | 17.5-R25 XHA * L3 | |
| | 17.5-R25 * L2/L3 PC RM | |
| | 17.5-25 16PR L3, 3PC Rim | |
| | 17.5-25 GY L2/L3 | |
| | 17.5-25 12PR L2, SNOW Flexport™ | |

- Other tire choices are available. Contact your Cat dealer for details.
- In certain applications, the loader's productive capabilities may exceed the tire's tonnes-km/h (ton-mph) capabilities.
- Caterpillar recommends that you consult a tire supplier to evaluate all conditions before selecting a tire model.

Cab

| | |
|------|------------------------|
| ROPS | ISO 3471:2008 |
| FOPS | ISO 3449:2005 Level II |

- Cab and Rollover Protective Structures (ROPS) are standard in North America and Europe.
- The declared dynamic operator sound pressure levels per ISO 6396:2008*, when properly installed and maintained, is 77 dB(A).
- The labelled sound power level for the CE marked configurations when measured according to the test procedure and conditions specified in 2000/14/EC is 103 dB(A).

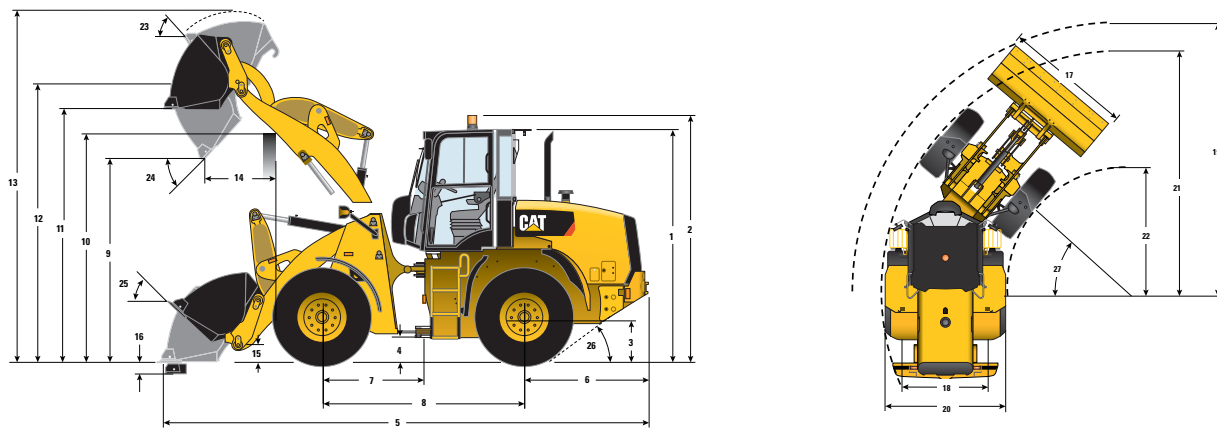
*The measurements were conducted with the cab doors and windows closed.

Axles

| | |
|-------|---------------------------------|
| Front | Fixed |
| | Locking differential (standard) |
| Rear | Oscillating ±11 degrees |
| | Locking differential (Standard) |

910M Compact Wheel Loader

Dimensions and Operating Specifications (All dimensions are approximate. Dimensions vary with bucket and tire choice.)

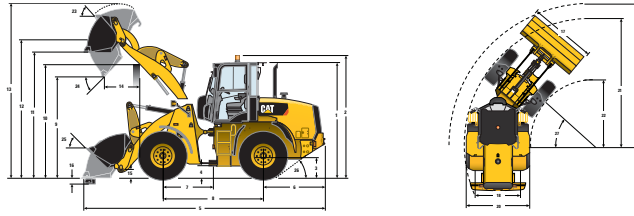


| | Standard Lift – IT | | Standard Lift – ISO | | Standard Lift – PO | |
|---|--------------------|-----------|---------------------|-----------|--------------------|-----------|
| *Vary with bucket. **Vary with tire. | | | | | | |
| ** 1 Height: Ground to Cab | 3020 mm | 9'10" | 3020 mm | 9'10" | 3020 mm | 9'10" |
| ** 2 Height: Ground to Beacon | 3210 mm | 10'6" | 3210 mm | 10'6" | 3210 mm | 10'6" |
| ** 3 Height: Ground Axle Center | 600 mm | 1'11" | 600 mm | 1'11" | 600 mm | 1'11" |
| ** 4 Height: Ground Clearance | 348 mm | 1'1" | 348 mm | 1'1" | 348 mm | 1'1" |
| * 5 Length: Overall | 6293 mm | 20'7" | 6350 mm | 20'10" | 6226 mm | 20'5" |
| 6 Length: Rear Axle to Bumper | 1590 mm | 5'2" | 1590 mm | 5'2" | 1590 mm | 5'2" |
| 7 Length: Hitch to Front Axle | 1300 mm | 4'3" | 1300 mm | 4'3" | 1300 mm | 4'3" |
| 8 Length: Wheel Base | 2600 mm | 8'6" | 2600 mm | 8'6" | 2600 mm | 8'6" |
| * 9 Clearance: Bucket at 45 Degrees | 2809 mm | 9'2" | 2772 mm | 9'1" | 2846 mm | 9'4" |
| ** 10 Clearance: Load Over Height | 3284 mm | 10'9" | 3284 mm | 10'9" | 3284 mm | 10'9" |
| ** 11 Clearance: Level Bucket | 3418 mm | 11'2" | 3418 mm | 11'2" | 3419 mm | 11'2" |
| ** 12 Height: Bucket Pin | 3673 mm | 12'0" | 3673 mm | 12'0" | 3673 mm | 12'0" |
| ** 13 Height: Overall | 4563 mm | 14'11" | 4599 mm | 15'1" | 4534 mm | 14'10" |
| * 14 Reach: Bucket at 45 Degrees | 820 mm | 2'8" | 863 mm | 2'9" | 759 mm | 2'5" |
| 15 Carry Height: Bucket Pin | 319 mm | 1'0" | 317 mm | 1'0" | 319 mm | 1'0" |
| ** 16 Dig Depth | 117 mm | 4.5" | 117 mm | 4.5" | 116 mm | 4.5" |
| 17 Width: Bucket | 2401 mm | 7'10" | 2401 mm | 7'10" | 2401 mm | 7'10" |
| 18 Width: Tread Center | 1800 mm | 5'10" | 1800 mm | 5'10" | 1800 mm | 5'10" |
| 19 Turning Radius: Over Bucket | 5199 mm | 17'0" | 5216 mm | 17'1" | 5180 mm | 16'11" |
| 20 Width: Over Tires | 2259 mm | 7'4" | 2259 mm | 7'4" | 2259 mm | 7'4" |
| 21 Turning Radius: Outside of Tires | 4716 mm | 15'5" | 4716 mm | 15'5" | 4716 mm | 15'5" |
| 22 Turning Radius: Inside of Tires | 2446 mm | 8'0" | 2446 mm | 8'0" | 2446 mm | 8'0" |
| 23 Rack Angle at Full Lift | 57 degrees | | 57 degrees | | 57 degrees | |
| 24 Dump Angle at Full Lift | 48 degrees | | 48 degrees | | 47 degrees | |
| 25 Rack Angle at Carry | 42 degrees | | 43 degrees | | 42 degrees | |
| 26 Departure Angle | 33 degrees | | 33 degrees | | 33 degrees | |
| 27 Articulation Angle | 40 degrees | | 40 degrees | | 40 degrees | |
| *Tipping Load – Straight (ISO 14397-1) | 5991 kg | 13,208 lb | 5867 kg | 12,935 lb | 6066 kg | 13,373 lb |
| *Tipping Load – Full Turn (ISO 14397-1) | 5062 kg | 11,160 lb | 4952 kg | 10,917 lb | 5152 kg | 11,358 lb |
| *Breakout Force | 6458 kg | 14,237 lb | 6298 kg | 13,885 lb | 7339 kg | 16,180 lb |
| *Operating Weight | 8090 kg | 17,835 lb | 8116 kg | 17,893 lb | 7734 kg | 17,051 lb |

Dimensions listed are for a machine configured with general purpose buckets, bolt-on cutting edges, 80 kg (176 lb) operator and 15.5 R25 (L2) tires.

910M Compact Wheel Loader

Dimensions and Operating Specifications (All dimensions are approximate. Dimensions vary with bucket and tire choice.)



| | High Lift – IT | | High Lift – ISO | | High Lift – PO | |
|---|----------------|-----------|-----------------|-----------|----------------|-----------|
| *Vary with bucket. **Vary with tire. | | | | | | |
| ** 1 Height: Ground to Cab | 3020 mm | 9'10" | 3020 mm | 9'10" | 3020 mm | 9'10" |
| ** 2 Height: Ground to Beacon | 3210 mm | 10'6" | 3210 mm | 10'6" | 3210 mm | 10'6" |
| ** 3 Height: Ground Axle Center | 600 mm | 1'11" | 600 mm | 1'11" | 600 mm | 1'11" |
| ** 4 Height: Ground Clearance | 348 mm | 1'1" | 348 mm | 1'1" | 348 mm | 1'1" |
| * 5 Length: Overall | 6825 mm | 22'4" | 6882 mm | 22'6" | 6758 mm | 22'2" |
| 6 Length: Rear Axle to Bumper | 1590 mm | 5'2" | 1590 mm | 5'2" | 1590 mm | 5'2" |
| 7 Length: Hitch to Front Axle | 1300 mm | 4'3" | 1300 mm | 4'3" | 1300 mm | 4'3" |
| 8 Length: Wheel Base | 2600 mm | 8'6" | 2600 mm | 8'6" | 2600 mm | 8'6" |
| * 9 Clearance: Bucket at 45 Degrees | 3176 mm | 10'5" | 3140 mm | 10'3" | 3219 mm | 10'6" |
| ** 10 Clearance: Load Over Height | 3397 mm | 11'1" | 3397 mm | 11'1" | 3397 mm | 11'1" |
| ** 11 Clearance: Level Bucket | 3774 mm | 12'4" | 3774 mm | 12'4" | 3775 mm | 12'4" |
| ** 12 Height: Bucket Pin | 4030 mm | 13'2" | 4030 mm | 13'2" | 4030 mm | 13'2" |
| ** 13 Height: Overall | 4920 mm | 16'1" | 4955 mm | 16'3" | 4891 mm | 16'0" |
| * 14 Reach: Bucket at 45 Degrees | 1054 mm | 3'5" | 1100 mm | 3'7" | 1004 mm | 3'3" |
| 15 Carry Height: Bucket Pin | 480 mm | 1'6" | 448 mm | 1'5" | 480 mm | 1'6" |
| ** 16 Dig Depth | 295 mm | 11.6" | 295 mm | 11.6" | 294 mm | 11.5" |
| 17 Width: Bucket | 2401 mm | 7'10" | 2401 mm | 7'10" | 2401 mm | 7'10" |
| 18 Width: Tread Center | 1800 mm | 5'10" | 1800 mm | 5'10" | 1800 mm | 5'10" |
| 19 Turning Radius: Over Bucket | 5440 mm | 17'10" | 5452 mm | 17'10" | 5419 mm | 17'9" |
| 20 Width: Over Tires | 2259 mm | 7'4" | 2259 mm | 7'4" | 2259 mm | 7'4" |
| 21 Turning Radius: Outside of Tires | 4716 mm | 15'5" | 4716 mm | 15'5" | 4716 mm | 15'5" |
| 22 Turning Radius: Inside of Tires | 2446 mm | 8'0" | 2446 mm | 8'0" | 2446 mm | 8'0" |
| 23 Rack Angle at Full Lift | 59 degrees | | 60 degrees | | 59 degrees | |
| 24 Dump Angle at Full Lift | 44 degrees | | 44 degrees | | 43 degrees | |
| 25 Rack Angle at Carry | 50 degrees | | 49 degrees | | 50 degrees | |
| 26 Departure Angle | 33 degrees | | 33 degrees | | 33 degrees | |
| 27 Articulation Angle | 40 degrees | | 40 degrees | | 40 degrees | |
| *Tipping Load – Straight (ISO 14397-1) | 5625 kg | 12,401 lb | 5524 kg | 12,178 lb | 5705 kg | 12,577 lb |
| *Tipping Load – Full Turn (ISO 14397-1) | 4709 kg | 10,382 lb | 4619 kg | 10,183 lb | 4802 kg | 10,587 lb |
| *Breakout Force | 6514 kg | 14,361 lb | 6351 kg | 14,002 lb | 7404 kg | 16,323 lb |
| *Operating Weight | 8654 kg | 19,079 lb | 8680 kg | 19,137 lb | 8299 kg | 18,296 lb |

Dimensions listed are for a machine configured with general purpose buckets, bolt-on cutting edges, 80 kg (176 lb) operator and 15.5 R25 (L2) tires.

For more complete information on Cat products, dealer services, and industry solutions, visit us on the web at www.cat.com

AEHQ7822 (05-2016)
(EU, NACD)

© 2016 Caterpillar
All rights reserved

Materials and specifications are subject to change without notice. Featured machines in photos may include additional equipment. See your Cat dealer for available options.

CAT, CATERPILLAR, SAFETY.CAT.COM, their respective logos, "Caterpillar Yellow" and the "Power Edge" trade dress, as well as corporate and product identity used herein, are trademarks of Caterpillar and may not be used without permission.

