



# Cat<sup>®</sup> 914M

## COMPACT WHEEL LOADER

### FEATURES:

- **Cat<sup>®</sup> Optimized Z-bar Loader Linkage** – The Cat Optimized Z-bar Loader linkage combines the digging efficiency of a traditional Z-bar with tool carrier capabilities for great performance and versatility. With parallel lift and high tilt forces throughout the working range you can safely and confidently handle loads with precise control.
- **Work Tools** – The 914M features the Cat exclusive, Performance Series Buckets, as well as high visibility pallet forks. These tools enhance productivity and are available with either an Integrated Toolcarrier (IT) or ISO (wide) coupler style. Legacy coupler tools such as brooms, grapple buckets, multi-purpose buckets and other work tools remain compatible.
- **Hydraulics and Controls** – State of the art electro-hydraulic system provides low effort, fine control with fast cycle times. All-in-one joystick helps keep eyes on the work. Operator can adjust machine responsiveness with the push of a button, which allows the operator to set up the machine exactly the way they want it based on the application. High Flow option allows for the use of even the most demanding work tools.
- **Tuned Drivetrain** – Smooth shifting and powerful acceleration is matched with modulated hydrostatic braking in the inching/braking pedal, creating a rhythm for material moving. Creeper and electronic engine speed control makes broom and snow blower work easy. Operator tunes between smooth or aggressive shifting with the push of a button.
- **Cab** – All around visibility is further enhanced with the availability of a rearview camera. The deluxe cab ensures operator comfort with a heated, air suspension seat and easy to use controls. Available features such as Implement and Hystat Aggressiveness, Ride Control, Lift and Tilt Kickouts, Engine Speed Control and Rimpull Control allow the operator to customize the machine via a soft touch keypad.
- **Serviceability** – Extended service intervals and excellent service access make daily checks quick and easy allowing you to get to work sooner.
- **Efficiently Powerful** with its high full turn tipping loads, powerful breakout forces and increased engine power the M Series delivers a balanced solution for all customer applications.
- **Standard Fuel Savings Features** such as Eco Mode, On Demand Cooling Fan, and Auto Engine Idle Shutdown make the 914M both powerful and fuel efficient.

## Specifications

### Engine

Engine Model	Cat C4.4 ACERT™	
Maximum Gross Power:		
Maximum Engine Speed	2,350 RPM	
SAE J1995	76 kW	102 hp
ISO 14396	74 kW	100 hp
ISO 14396 (DIN)	74 kW	101 hp
Rated Net Power:		
Rated Engine Speed	2,200 RPM	
SAE J1349	72 kW	96 hp
ISO 9249	72 kW	97 hp
ISO 9249 (DIN)	72 kW	98 hp
Displacement	4.4 L	268 in <sup>3</sup>
Bore	105 mm	4.13 in
Stroke	127 mm	5.00 in

### Engine (continued)

Maximum Gross Torque:		
SAE J1995	455 N-m	336 lbf-ft
ISO 14396	450 N-m	332 lbf-ft
Maximum Net Torque:		
SAE J1349	441 N-m	325 lbf-ft
ISO 9249	446 N-m	329 lbf-ft

- Engine meets U.S. EPA Tier 4 Final/EU Stage IV emission standards.
- Net power advertised is the power available at the flywheel plus front drive implement pump when the engine is equipped with fan, air cleaner, muffler and alternator.



# 914M Compact Wheel Loader

## Buckets

Bucket Capacities – General Purpose	1.3-1.9 m <sup>3</sup>	1.7-2.5 yd <sup>3</sup>
-------------------------------------	------------------------	-------------------------

## Steering

Steering Articulation Angle (each direction)	40 degrees	
Maximum Flow – Steering Pump	82 L/min	22 gal/min
Maximum Working Pressure – Steering Pump	22 500 kPa	3,263 psi
Steering Cycle Times (full left to full right):		
At 2,350 RPM: 90 RPM steering wheel speed	2.8 seconds	
Number of Steering Wheel Turns – full left to full right or full right to full left	3.75 turns	

## Loader Hydraulic System

Maximum Flow – Implement Pump	148 L/min	39 gal/min
3rd Function, Maximum Flow, Standard	90 L/min	24 gal/min
3rd Function, Maximum Flow, High	120 L/min	32 gal/min
4rd Function, Maximum Flow	90 L/min	24 gal/min
Maximum Working Pressure – Implement Pump	28 000 kPa	4,061 psi
Relief Pressure – Tilt Cylinder	34 000 kPa	4,931 psi
3rd Function Maximum Working Pressure	21 000 kPa	3,046 psi
4th Function Maximum Working Pressure	21 000 kPa	3,046 psi

### Hydraulic Cycle Times:

Raise (ground level to maximum lift)	5.2 seconds	
Dump (at maximum reach)	1.4 seconds	
Rack Back	2.2 seconds	
Float Down (maximum lift to ground level)	3.7 seconds	
Total Cycle Time	12.5 seconds	

## Service Refill Capacities

Fuel Tank	154.0 L	40.7 gal
Cooling System	21.5 L	5.7 gal
Engine Crankcase	8.8 L	2.3 gal
Axles:		
Front Center Differential	7.5 L	2.0 gal
Rear Center Differential	7.5 L	2.0 gal
Hydraulic System (including tank)	98.0 L	25.9 gal
Hydraulic Tank	55.0 L	14.5 gal
Transmission	3.4 L	0.9 gal
Diesel Exhaust Fluid (DEF) Tank	18.9 L	5.0 gal

- DEF used in Cat SCR systems must meet the requirements outlined in the International Organization for Standardization (ISO) standard 22241-1.

## Transmission

Forward and Reverse:		
Low Range, Speed Range 1*	10 km/h	6.3 mph
Low Range, Speed Range 2*	20 km/h	12.5 mph
High Range	40 km/h	25 mph

\*Creeper Control allows speed control from a stand still up to 10 km/h (6.3 mph). The Creeper Control will only work in Range 1.

## Tires

Standard Size	17.5-25 12PR	
Other Choices Include:	17.5-25 12PR L2	
	17.5-R25 XHA * L3	
	17.5-R25 * L2/L3 PC RM	
	17.5-25 16PR L3, 3PC Rim	
	17.5-25 GY L2/L3	
	17.5-25 12PR L2, SNOW Flexport™	

- Other tire choices are available. Contact your Cat dealer for details.
- In certain applications, the loader's productive capabilities may exceed the tire's tonnes-km/h (ton-mph) capabilities.
- Caterpillar recommends that you consult a tire supplier to evaluate all conditions before selecting a tire model.

## Cab

ROPS	ISO 3471:2008
FOPS	ISO 3449:2005 Level II

- Cab and Rollover Protective Structures (ROPS) are standard in North America and Europe.
- The declared dynamic operator sound pressure levels per ISO 6396:2008\*, when properly installed and maintained, is 77 dB(A).
- The labelled sound power level for the CE marked configurations when measured according to the test procedure and conditions specified in 2000/14/EC is 103 dB(A).

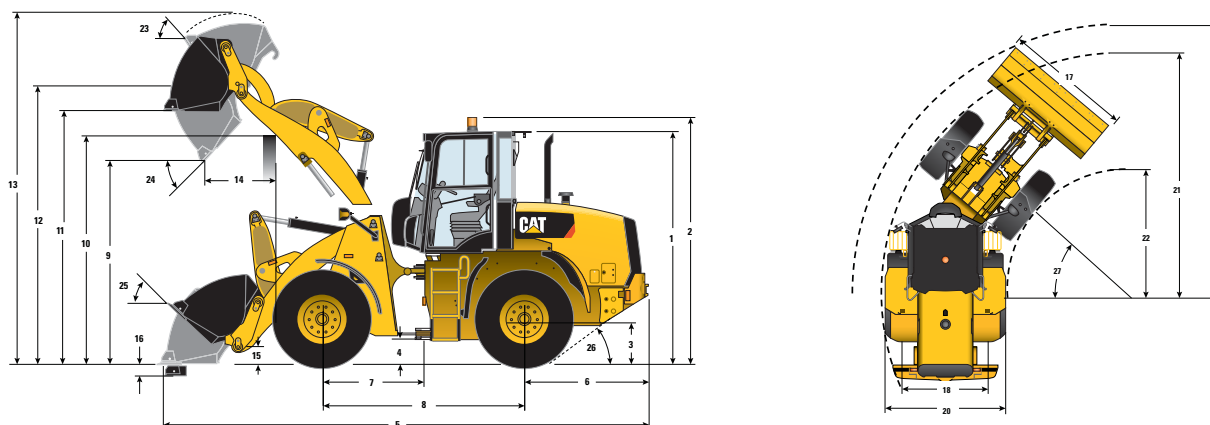
\*The measurements were conducted with the cab doors and windows closed.

## Axles

Front	Fixed
	Locking differential (standard)
Rear	Oscillating ±11 degrees
	Locking differential (Standard)

# 914M Compact Wheel Loader

## Dimensions and Operating Specifications (All dimensions are approximate. Dimensions vary with bucket and tire choice.)

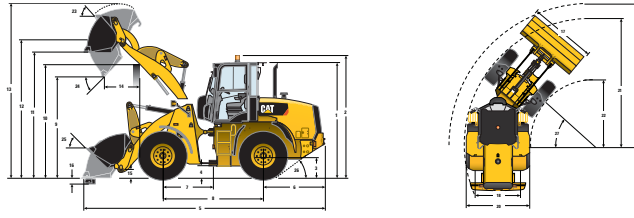


	Standard Lift – IT		Standard Lift – ISO		Standard Lift – PO	
*Vary with bucket. **Vary with tire.						
** 1 Height: Ground to Cab	3093 mm	10'1"	3093 mm	10'1"	3093 mm	10'1"
** 2 Height: Ground to Beacon	3283 mm	10'9"	3283 mm	10'9"	3283 mm	10'9"
** 3 Height: Ground Axle Center	640 mm	2'1"	640 mm	2'1"	640 mm	2'1"
** 4 Height: Ground Clearance	405 mm	1'3"	405 mm	1'3"	405 mm	1'3"
* 5 Length: Overall	6362 mm	20'10"	6419 mm	21'0"	6291 mm	20'7"
6 Length: Rear Axle to Bumper	1600 mm	5'2"	1600 mm	5'2"	1600 mm	5'2"
7 Length: Hitch to Front Axle	1300 mm	4'3"	1300 mm	4'3"	1300 mm	4'3"
8 Length: Wheel Base	2600 mm	8'6"	2600 mm	8'6"	2600 mm	8'6"
* 9 Clearance: Bucket at 45 Degrees	2775 mm	9'1"	2738 mm	8'11"	2820 mm	9'3"
** 10 Clearance: Load Over Height	3315 mm	10'10"	3315 mm	10'10"	3315 mm	10'10"
** 11 Clearance: Level Bucket	3446 mm	11'3"	3446 mm	11'3"	3447 mm	11'3"
** 12 Height: Bucket Pin	3701 mm	12'1"	3701 mm	12'1"	3701 mm	12'1"
** 13 Height: Overall	4674 mm	15'4"	4695 mm	15'4"	4621 mm	15'1"
* 14 Reach: Bucket at 45 Degrees	847 mm	2'9"	889 mm	2'10"	790 mm	2'7"
15 Carry Height: Bucket Pin	317 mm	1'0"	322 mm	1'0"	317 mm	1'0"
** 16 Dig Depth	89 mm	3.5"	90 mm	3.5"	89 mm	3.4"
17 Width: Bucket	2401 mm	7'10"	2401 mm	7'10"	2401 mm	7'10"
18 Width: Tread Center	1800 mm	5'10"	1800 mm	5'10"	1800 mm	5'10"
19 Turning Radius: Over Bucket	5222 mm	17'1"	5240 mm	17'2"	5200 mm	17'0"
20 Width: Over Tires	2259 mm	7'4"	2259 mm	7'4"	2259 mm	7'4"
21 Turning Radius: Outside of Tires	4741 mm	15'6"	4741 mm	15'6"	4741 mm	15'6"
22 Turning Radius: Inside of Tires	2426 mm	8'0"	2426 mm	8'0"	2426 mm	8'0"
23 Rack Angle at Full Lift	57 degrees		57 degrees		57 degrees	
24 Dump Angle at Full Lift	48 degrees		48 degrees		48 degrees	
25 Rack Angle at Carry	41 degrees		41 degrees		41 degrees	
26 Departure Angle	33 degrees		33 degrees		33 degrees	
27 Articulation Angle	40 degrees		40 degrees		40 degrees	
*Tipping Load – Straight (ISO 14397-1)	6387 kg	14,081 lb	6242 kg	13,761 lb	6546 kg	14,431 lb
*Tipping Load – Full Turn (ISO 14397-1)	5374 kg	11,848 lb	5247 kg	11,568 lb	5539 kg	12,211 lb
*Breakout Force	7357 kg	16,219 lb	6924 kg	15,265 lb	8730 kg	19,246 lb
*Operating Weight	8740 kg	19,268 lb	8761 kg	19,315 lb	8360 kg	18,431 lb

Dimensions listed are for a machine configured with general purpose IT buckets, bolt-on cutting edges, 80 kg (176 lb) operator and 17.5 R25 (L2) tires.

# 914M Compact Wheel Loader

**Dimensions and Operating Specifications** (All dimensions are approximate. Dimensions vary with bucket and tire choice.)



	High Lift – IT		High Lift – ISO		High Lift – PO	
*Vary with bucket. **Vary with tire.						
** 1 Height: Ground to Cab	3093 mm	10'1"	3093 mm	10'1"	3093 mm	10'1"
** 2 Height: Ground to Beacon	3283 mm	10'9"	3283 mm	10'9"	3283 mm	10'9"
** 3 Height: Ground Axle Center	640 mm	2'1"	640 mm	2'1"	640 mm	2'1"
** 4 Height: Ground Clearance	405 mm	1'3"	405 mm	1'3"	405 mm	1'3"
* 5 Length: Overall	6905 mm	22'7"	6962 mm	22'10"	6834 mm	22'5"
6 Length: Rear Axle to Bumper	1600 mm	5'2"	1600 mm	5'2"	1600 mm	5'2"
7 Length: Hitch to Front Axle	1300 mm	4'3"	1300 mm	4'3"	1300 mm	4'3"
8 Length: Wheel Base	2600 mm	8'6"	2600 mm	8'6"	2600 mm	8'6"
* 9 Clearance: Bucket at 45 Degrees	3141 mm	10'3"	3105 mm	10'2"	3188 mm	10'5"
** 10 Clearance: Load Over Height	3429 mm	11'2"	3429 mm	11'2"	3429 mm	11'2"
** 11 Clearance: Level Bucket	3800 mm	12'5"	3799 mm	12'5"	3800 mm	12'5"
** 12 Height: Bucket Pin	4055 mm	13'3"	4055 mm	13'3"	4055 mm	13'3"
** 13 Height: Overall	5027 mm	16'5"	5048 mm	16'6"	4974 mm	16'3"
* 14 Reach: Bucket at 45 Degrees	1083 mm	3'6"	1127 mm	3'8"	1029 mm	3'4"
15 Carry Height: Bucket Pin	483 mm	1'6"	455 mm	1'5"	483 mm	1'6"
** 16 Dig Depth	273 mm	10.7"	273 mm	10.7"	272 mm	10.7"
17 Width: Bucket	2401 mm	7'10"	2401 mm	7'10"	2401 mm	7'10"
18 Width: Tread Center	1800 mm	5'10"	1800 mm	5'10"	1800 mm	5'10"
19 Turning Radius: Over Bucket	5471 mm	17'11"	5484 mm	17'11"	5448 mm	17'10"
20 Width: Over Tires	2259 mm	7'4"	2259 mm	7'4"	2259 mm	7'4"
21 Turning Radius: Outside of Tires	4741 mm	15'6"	4741 mm	15'6"	4741 mm	15'6"
22 Turning Radius: Inside of Tires	2426 mm	8'0"	2426 mm	8'0"	2426 mm	8'0"
23 Rack Angle at Full Lift	59 degrees		59 degrees		59 degrees	
24 Dump Angle at Full Lift	44 degrees		44 degrees		44 degrees	
25 Rack Angle at Carry	49 degrees		48 degrees		49 degrees	
26 Departure Angle	33 degrees		33 degrees		33 degrees	
27 Articulation Angle	40 degrees		40 degrees		40 degrees	
*Tipping Load – Straight (ISO 14397-1)	5656 kg	12,469 lb	5547 kg	12,229 lb	6025 kg	13,283 lb
*Tipping Load – Full Turn (ISO 14397-1)	4722 kg	10,410 lb	4626 kg	10,199 lb	5060 kg	11,155 lb
*Breakout Force	7466 kg	16,460 lb	7024 kg	15,485 lb	8861 kg	19,535 lb
*Operating Weight	9114 kg	20,093 lb	9135 kg	20,140 lb	8887 kg	19,592 lb

Dimensions listed are for a machine configured with general purpose IT buckets, bolt-on cutting edges, 80 kg (176 lb) operator and 17.5 R25 (L2) tires.

For more complete information on Cat products, dealer services, and industry solutions, visit us on the web at [www.cat.com](http://www.cat.com)

AEHQ7823 (05-2016)  
(EU, NACD)

© 2016 Caterpillar  
All rights reserved

Materials and specifications are subject to change without notice. Featured machines in photos may include additional equipment. See your Cat dealer for available options.

CAT, CATERPILLAR, SAFETY.CAT.COM, their respective logos, "Caterpillar Yellow" and the "Power Edge" trade dress, as well as corporate and product identity used herein, are trademarks of Caterpillar and may not be used without permission.

