



Cat[®]

CB1.7 and CB1.8

UTILITY COMPACTORS

TOP SELLING FEATURES:

1. Simple Operation

- Ergonomic operating environment with vandal protection
- Spacious seating and easy access due to logically placed handles and lower platform height
- Simple operation with mechanical propel and speed control levers

2. Efficient Performance

- Compact size for excellent maneuverability in tight spaces
- Excellent drum-edge visibility enhances control for better coverage and compaction results
- Industry-leading compaction force delivers outstanding results
- Industry-leading water tank capacity of 145 L (38 gal) sized for less fills throughout the day
- Single-Point Lift for trench work and alternative transport options

3. Optimized Power

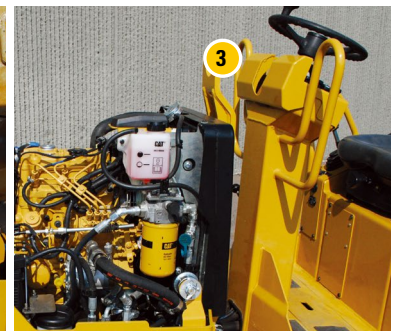
- Powerful Cat[®] C1.1 engine; single source supplier for parts, service, and support
- Cooling system capability of up to 49° C (120° F) for good performance in harsh environments
- Quickly move around the job site with a fast travel speed of 8.6 kph (5.3 mph) for good mobility

4. Reliable and Easy to Maintain

- 3 year/3000 hour vibratory drum service interval
- Reliable triple filtration design for the water spray system
- Easy access to engine service points
- Robust hitch design easily supports single lift point option
- Remote monitoring available with Product Link[™] option



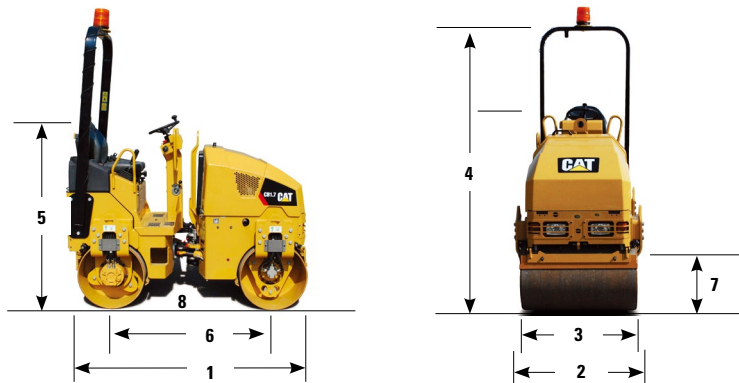
- 1 Simple Console Design
- 2 Enhanced Visibility
- 3 Single Point Lift Option
- 4 Spacious Operating Environment
- 5 Foldable ROPS Option
- 6 Quick Service Access



CB1.7, CB1.8 Utility Compactors

Dimensions

	CB1.7	CB1.8
1 Overall length - mm (in)	2040 (80)	2040 (80)
2 Overall width - mm (in)	1012 (40)	1112 (44)
3 Drum width - mm (in)	900 (35")	1000 (39)
Drum shell thickness - mm (in)	10 (0.39)	10 (0.39)
Drum diameter - mm (in)	575 (22.5)	575 (22.5)
4 Height with ROPS/FOPS - mm (in)	2400 (94.5)	2400 (94.5)
Height without ROPS/FOPS (steering wheel) - mm (in)	1630 (64)	1630 (64)
5 Transport height (w/foldable ROPS) - mm (in)	1630 (64)	1630 (64)
6 Wheelbase - mm (in)	1376 (54)	1376 (54)
Inside turning radius - mm (in)	1950 (77)	1900 (75)
7 Curb clearance - mm (in)	403 (16)	403 (16)
8 Ground clearance - mm (in)	251 (10)	251 (10)



Power, Weights, and Vibratory Specifications

	CB1.7	CB1.8
Cat C1.1 Engine - kW (hp)*	18.4 (24.7)	
Operating Weight - kg (lb)**	1605 (3,538)	1735 (3,825)
Max. Operating Weight - kg (lb)***	1808 (3,985)	1953 (4,305)
Static Linear Load - kg/cm (pli)	9.4 (72)	9.1 (63)
Amplitude - mm (in)	0.50 (0.019)	0.47 (0.018)
Frequency - Hz (vpm)	57 (3,420)	
Centrifugal Force Maximum - kN (lbF)	13.6 (3,057)	

* C1.1 meets U.S. EPA Tier 4 Final and EU Stage V emissions.

** Standard Operating weight includes 80 kg operator, full fuel and 1/2 full water tank

*** Maximum Operating weight includes 80 kg operator full fuel, full water tank, and attachments

Capacities

Fuel Tank - L (gal)	30 (7.9)
Cooling System - L (gal)	3.9 (1.0)
Engine Oil w/filter - L (gal)	4.4 (1.1)
Hydraulic Tank - L (gal)	34 (8.9)
Water Tank - L (gal)	145 (38)

Performance

Travel Speed - km/hr (mph)	8.6 (5.3)
Maximum Gradeability	20°
Articulation Angle	32°
Oscillation Angle	8°
Water Spray Timer Interval	15 sec
Alternator - 12 volt	40 amp
Battery	650 CCA

OPTIONAL EQUIPMENT

- Battery disconnect switch
- Bio-hydraulic oil
- Lights, working, roading, IRH
- Light guard
- Non-suspension seat
- Product Link
- ROPS, fixed
- ROPS, foldable
- Single lift point
- Suspension seat w/safety switch
- Warning light

For more complete information on Cat products, dealer services, and industry solutions, visit us on the web at www.cat.com

© 2020 Caterpillar
All rights reserved

QEHQ2351-01 (1/20)

Materials and specifications are subject to change without notice. Featured machines in photos may include additional equipment. See your Cat dealer for available options.

CAT, CATERPILLAR, LET'S DO THE WORK, their respective logos, "Caterpillar Yellow," the "Power Edge" and Cat "Modern Hex" trade dress as well as corporate and product identity used herein, are trademarks of Caterpillar and may not be used without permission.

VisionLink is a trademark of Trimble Navigation Limited, registered in the United States and in other countries.

