



Cat[®] TH514C

TELEHANDLER

Specifications

Engine

Model	Cat [®] C3.4B*	
Gross Power (ISO 14396)	74.5 kW	100 hp
Maximum Torque	420 N-m/1,400 rpm	
Bore	99 mm	3.90 in
Stroke	110 mm	4.3 in
Displacement	3.4 L	207.5 in ³

* meets U.S. EPA Tier 4 Interim Emission Standards

Weights

Operating Weight with Carriage & Forks	11 320 kg	23,722 lb
--	-----------	-----------

Operating Specifications

Rated Load Capacity	4990 kg	11,000 lb
Maximum Lift Height		
Stabilizers Up	13.7 m	45 ft
Stabilizers Down	13.7 m	45 ft
Maximum Forward Reach	9.2 m	30 ft 3 in
Top Travel Speed	34.7 kph	21.6 mph
Load at Max Height		
Stabilizers Up	1814 kg	4,000 lb
Stabilizers Down	3175 kg	7,000 lb
Load at Max Reach		
Stabilizers Up	454 kg	1,000 lb
Stabilizers Down	1361 kg	3,000 lb
Outside Turning Radius Over Tires	3.92 m	12 ft 10 in
Outside Turning Radius Over Forks	5.57 m	18 ft 3 in
Drawbar Pull 74.5 kW	98 kN	22,037 lb

Service Refill Capacities

Fuel Tank	150 L	39.63 gal
Hydraulic Tank	90 L	23.78 gal

Tires

Standard 14.00-24 16PR TG-02

Brakes

Service Brakes	Servo assisted on front axle
Parking Brakes	Mechanical on front axle

Hydraulic System

Maximum System Pressure	250 bar	3,626 psi
Maximum Pump Flow	150 L/min	39.63 gal/min
Pump Type	Variable displacement load sensing axial piston pump	
Auxiliary Hydraulic Supply		
Intermittent	80 L/min	21.13 gal/min
Continuous	60 L/min	15.85 gal/min

Transmission Speeds

Forward		
1	5.8 kph	3.6 mph
2	10.8 kph	6.7 mph
3	24.5 kph	15.2 mph
4	34.7 kph	21.6 mph
Reverse		
1	5.5 kph	3.4 mph
2	10.8 kph	6.7 mph
3	24 kph	14.9 mph

Boom Performance

Boom Up	13.7 Seconds	
Boom Down	14.6 Seconds	
Tele In	19.1 Seconds	
Tele Out	16.6 Seconds	
Crowd Forward (dump)	4.8 Seconds	
Crowd Backward	4.7 Seconds	
Combined		
Up and Out	28.0 Seconds	
Down and In	19.0 Seconds	
Bucket Breakout Force to ISO 8313	69 kN	15,512 lb
Boom Breakout Force	95 kN	21,357 lb

Sound

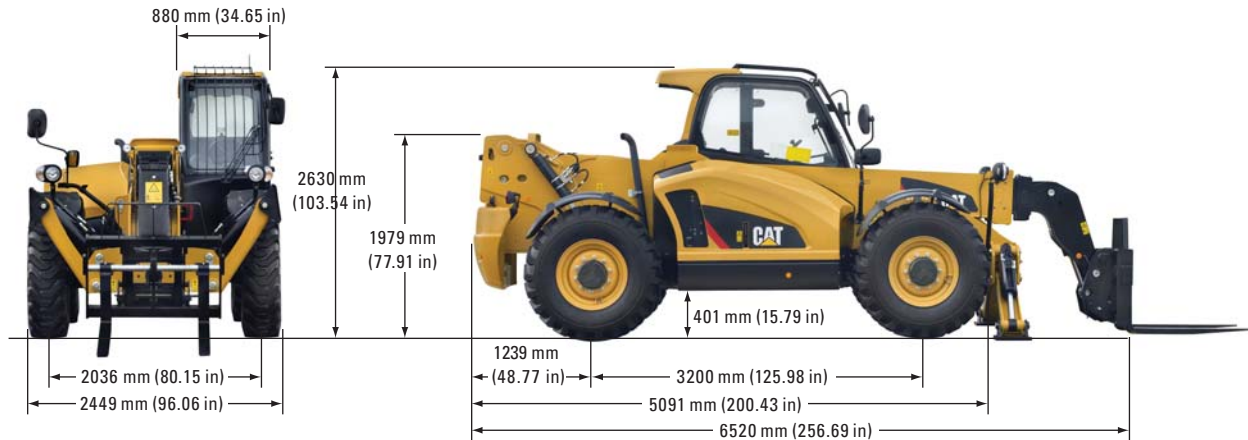
Exterior Sound (74.5 kW Engine)	106 dB(A)
---------------------------------	-----------



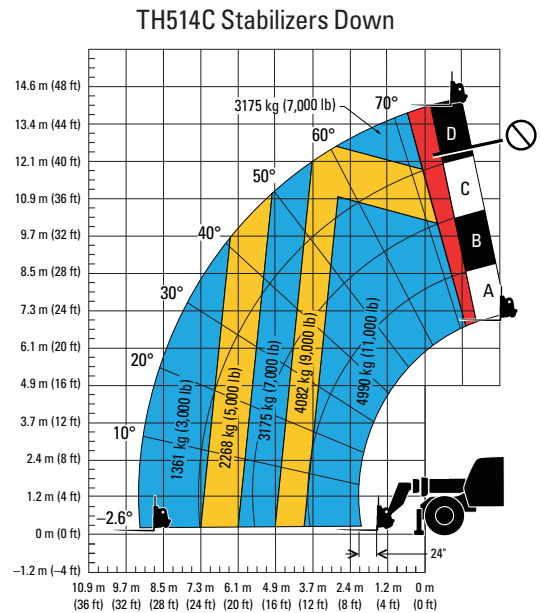
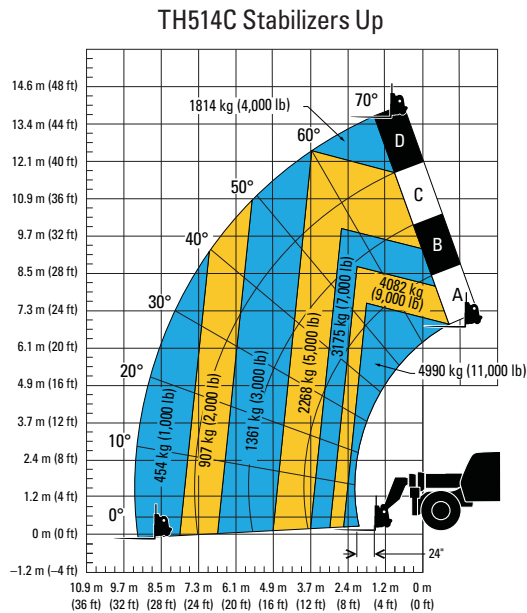
TH514C Telehandler

Dimensions

All dimensions are approximate.



Load Chart and Dimensions



IMPORTANT

Rated lift capacities shown are with machine equipped with carriage and pallet forks. The machine must be level on a firm surface with undamaged, properly inflated tires as specified by the manufacturer. Machine specifications and stability are based on rated lift capacities at specific boom angles and boom lengths.

(If specifications are critical, the proposed application should be discussed with your dealer.)

DO NOT exceed rated lift capacity loads, as unstable and dangerous machine conditions will result.

DO NOT tip the machine forward to determine the allowable load.

Use only JLG approved attachments with proper material handler model/attachment load capacity charts displayed in the operator's cab. OSHA requires all rough terrain forklift operators be trained according to OSHA 29 CFR 1910.178 (I).

Due to continuous product improvements, machine specifications and/or equipment changes may be made without prior notification. This machine meets or exceeds ANSI/ITSD F B56.6-2005 as originally manufactured for intended applications.

For more complete information on Cat products, dealer services, and industry solutions, visit us on the web at www.cat.com

AEHQ6930 (02-13)

© 2013 Caterpillar
All Rights Reserved
Printed in U.S.A.

Materials and specifications are subject to change without notice. Featured machines in photos may include additional equipment. See your Cat dealer for available options.

CAT, CATERPILLAR, SAFETY.CAT.COM, their respective logos, "Caterpillar Yellow" and the "Power Edge" trade dress, as well as corporate and product identity used herein, are trademarks of Caterpillar and may not be used without permission.

