



317 GC

Hydraulic Excavator

Technical Specifications

Configurations and features may vary by region. Please consult your Cat® dealer for availability in your area.

Table of Contents

Specifications	2
Engine	2
Swing Mechanism	2
Weights	2
Track	2
Drive	2
Hydraulic System	2
Service Refill Capacities	2
Standards	2
Sound Performance	2
Air Conditioning System	2
Operating Weights and Ground Pressures	3
Major Component Weights	3
Dimensions	4
Working Ranges	5
Reach Boom Lift Capacities	6
Bucket Specifications and Compatibility	9
Attachments Offering Guide	11
Standard and Optional Equipment	15
Dealer Installed Kits and Attachments	17



317 GC Hydraulic Excavator Specifications

Engine

Engine Model	Cat® C3.6	
Net Power – ISO 9249:2007	89 kW	119 hp
Engine Power – ISO 14396:2002	90 kW	121 hp
Bore	98 mm	4 in
Stroke	120 mm	5 in
Displacement	3.6 L	220 in ³
Biodiesel Capability	Up to B20 ⁽¹⁾	

- Meets EU Stage V emission standards.
- No engine power derate required below 3000 m (9,840 ft) altitude.
- Net power is tested per ISO 9249. Standards in effect at the time of manufacture.
- Net power advertised is the power available at the flywheel when the engine is equipped with fan, air intake system, exhaust system and alternator.
- Engine speed at 2,400 rpm.

⁽¹⁾Cat engines are compatible with the following renewable, alternative, and bio-fuels* with lower greenhouse gas emission impact:

- ✓ Up to B20 biodiesel (FAME)**
- ✓ Up to 100% HVO and GTL renewable fuels

*Refer to guidelines for successful application. Please consult your Cat dealer or “Caterpillar Machine Fluids Recommendations” (SEBU6250) for details.

**For use of higher blends, consult your Cat dealer.

Swing Mechanism

Swing Speed	8.7 rpm	
Maximum Swing Torque	61 kN·m	44,990 lbf-ft

Weights

Operating Weight	17 100 kg	37,600 lb
------------------	-----------	-----------

- Long undercarriage, Reach boom, R2.9 (9'6") stick, GD 1.00 m³ (1.31 yd³) bucket, 500 mm (20") triple grouser shoes and 3.05 mt (6,720 lb) counterweight.

Track

Standard Track Shoes Width	500 mm	20 in
Optional Track Shoes Width	600 mm	24 in
Optional Track Shoes Width	700 mm	28 in
Number of Shoes (each side)	44	
Number of Track Rollers (each side)	7	
Number of Carrier Rollers (each side)	2	

Drive

Gradeability	35°/70%	
Maximum Travel Speed	5.3 km/h	3.3 mph
Maximum Drawbar Pull	157 kN	35,295 lbf

Hydraulic System

Main System – Maximum Flow – Implement	296 L/min	78 gal/min
Maximum Pressure – Equipment	35 000 kPa	5,075 psi
Maximum Pressure – Travel	35 000 kPa	5,075 psi
Maximum Pressure – Swing	25 800 kPa	3,741 psi
Boom Cylinder – Bore	110 mm	4 in
Boom Cylinder – Stroke	1193 mm	47 in
Stick Cylinder – Bore	120 mm	5 in
Stick Cylinder – Stroke	1331 mm	52 in
Bucket Cylinder – Bore	105 mm	4 in
Bucket Cylinder – Stroke	1039 mm	41 in

Service Refill Capacities

Fuel Tank Capacity	271 L	71.6 gal
Cooling System	22 L	5.8 gal
Engine Oil	11 L	2.9 gal
Final Drive (each)	6 L	1.6 gal
Hydraulic System (including tank)	94 L	24.8 gal
Hydraulic Tank	87 L	23.0 gal
DEF Tank	22 L	5.9 gal

Standards

Brakes	ISO 10265:2008
Cab/ROPS	ISO 12117-2:2008
Cab/FOGS	ISO 10262:1998

Sound Performance

ISO 6395 (external)	101 dB(A)
ISO 6396 (inside cab)	70 dB(A)

- When properly installed and maintained, the cab offered by Caterpillar, when tested with doors and windows closed according to ANSI/SAE J1166 OCT98, meets OSHA and MSHA requirements for operator sound exposure limits in effect at time of manufacture.
- Hearing protection may be needed when operating with an open operator station and cab (when not properly maintained or doors/windows open) for extended periods or in a noisy environment.

Air Conditioning System

The air conditioning system on this machine contains the fluorinated greenhouse gas refrigerant R134a (Global Warming Potential = 1430). The system contains 0.9 kg of refrigerant, which has a CO₂ equivalent of 1.287 metric tonne.

317 GC Hydraulic Excavator Specifications

Operating Weights and Ground Pressures

	500 mm (20")		600 mm (24")		700 mm (28")	
	Triple Grouser Shoes		Triple Grouser Shoes		Triple Grouser Shoes	
	Weight	Ground Pressure	Weight	Ground Pressure	Weight	Ground Pressure
Base Machine with 3.05 mt (6,720 lb) Counterweight and Long Undercarriage	kg (lb)	kPa (psi)	kg (lb)	kPa (psi)	kg (lb)	kPa (psi)
Reach Boom + R2.6 (8'6") Stick + 1.00 m ³ (1.31 yd ³) GD Bucket	17 000 (37,500)	48.3 (7.0)	17 200 (38,000)	40.8 (5.9)	17 500 (38,500)	35.4 (5.1)
Reach Boom + R2.9 m (9'6") Stick + 1.00 m ³ (1.31 yd ³) GD Bucket	17 100 (37,600)	48.5 (7.0)	17 300 (38,100)	40.9 (5.9)	17 500 (38,600)	35.6 (5.2)

All operating weights include a 90% fuel tank with 75 kg (165 lb) operator.

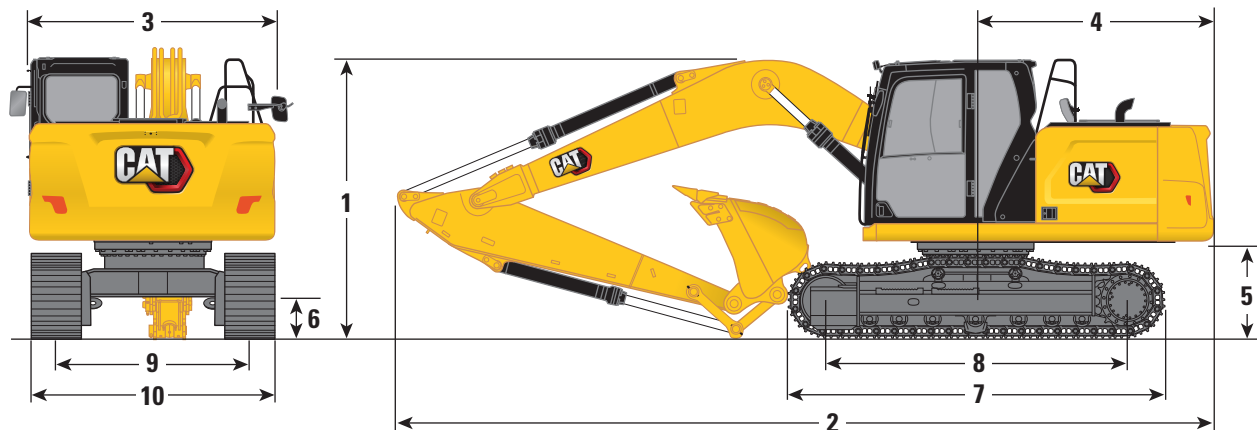
Major Component Weights

	kg	lb
Base Machine (with 3.05 mt [6,720 lb] counterweight, upper frame [including swing frame], long undercarriage – does not include boom, stick, bucket, boom cylinders, stick cylinder, bucket cylinders, tracks, 90% fuel tank and 75 kg [165 lb] operator).	11 430	25,200
Track Shoes:		
500 mm (20") Triple Grouser Track Shoes	2110	4,660
600 mm (24") Triple Grouser Track Shoes	2340	5,160
700 mm (28") Triple Grouser Track Shoes with Additional Steps	2580	5,680
Two Boom Cylinders	300	670
Weight of 90% Fuel Tank and 75 kg (165 lb) Operator	300	660
Counterweight:		
3.05 mt (6,720 lb) Counterweight	3050	6,720
Swing Frame	1690	3,720
Undercarriage:		
Base Frame with Long Undercarriage	3900	8,600
Boom (including lines, pins, stick cylinder):		
Reach Boom (5.1 m/16'9")	1320	2,910
Sticks (including lines, pins, bucket cylinder, bucket linkage):		
Reach Stick (R2.6/8'6")	810	1,780
Reach Stick (R2.9 m/9'6")	880	1,930
Bucket (without linkage):		
1.00 m ³ (1.31 yd ³) GD Bucket	740	1,620
Quick Coupler:		
Pin Grabber Quick Coupler	260	580

317 GC Hydraulic Excavator Specifications

Dimensions

All dimensions are approximate and may vary depending on bucket selection.



Boom Option

Reach Boom
5.1 m (16'9")

Stick Options

Reach Stick
R2.6 (8'6")

Reach Stick
R2.9 (9'6")

1 Machine Height:

Top of Cab Height	2930 mm	9'7"	2930 mm	9'7"
Top of FOGS Height	3070 mm	10'1"	3070 mm	10'1"
Handrails Height	2940 mm	9'8"	2940 mm	9'8"
With Boom/Stick/Bucket Installed (with stick cylinder lines)	2980 mm	9'9"	3030 mm	9'11"
With Boom/Stick Installed (with stick cylinder lines)	2870 mm	9'5"	2910 mm	9'7"
With Boom Installed (with stick cylinder lines)	2460 mm	8'1"	2460 mm	8'1"

2 Machine Length:

With Boom/Stick/Bucket Installed (with stick cylinder lines)	8550 mm	28'1"	8570 mm	28'1"
With Boom/Stick Installed (with stick cylinder lines)	8520 mm	27'11"	8550 mm	28'1"
With Boom Installed (with stick cylinder lines)	7560 mm	24'10"	7560 mm	24'10"

3 Upperframe Width

2540 mm	8'4"	2540 mm	8'4"
---------	------	---------	------

4 Tail Swing Radius:

3.05 mt (6,720 lb) Counterweight	2500 mm	8'2"	2500 mm	8'2"
----------------------------------	---------	------	---------	------

5 Counterweight Clearance

1010 mm	3'4"	1010 mm	3'4"
---------	------	---------	------

6 Ground Clearance

430 mm	1'5"	430 mm	1'5"
--------	------	--------	------

7 Track Length

3970 mm	13'0"	3970 mm	13'0"
---------	-------	---------	-------

8 Length to Center of Rollers

3170 mm	10'5"	3170 mm	10'5"
---------	-------	---------	-------

9 Track Gauge

1990 mm	6'6"	1990 mm	6'6"
---------	------	---------	------

10 Undercarriage Width:

500 mm (20") Shoes	2490 mm	8'2"	2490 mm	8'2"
600 mm (24") Shoes	2590 mm	8'6"	2590 mm	8'6"
700 mm (28") Shoes (with steps)	2690 mm	8'10"	2690 mm	8'10"

Bucket Type

GD

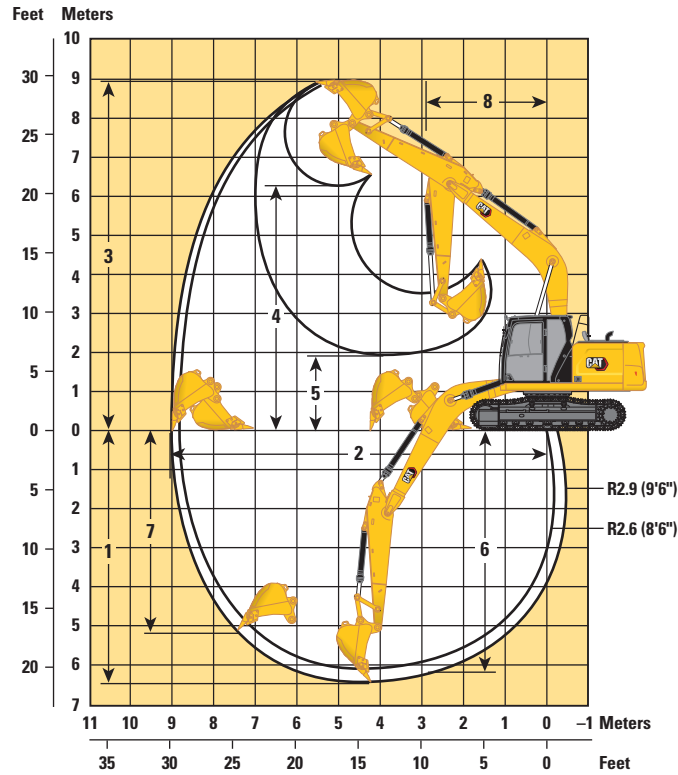
GD

Bucket Capacity	1.00 m ³	1.31 yd ³	0.76 m ³	0.99 yd ³
Bucket Tip Radius	1300 mm	4'3"	1050 mm	3'5"

317 GC Hydraulic Excavator Specifications

Working Ranges

All dimensions are approximate and may vary depending on bucket selection.



Boom Option

Reach Boom
5.1 m (16'9")

Stick Options

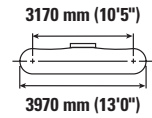
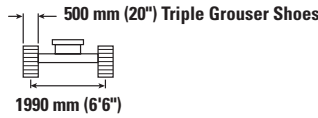
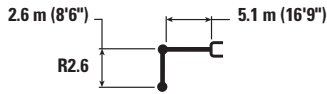
Reach Stick
R2.6 (8'6")

Reach Stick
R2.9 (9'6")

	Reach Stick R2.6 (8'6")		Reach Stick R2.9 (9'6")	
1 Maximum Digging Depth	6100 mm	20'0"	6400 mm	21'0"
2 Maximum Reach at Ground Line	8790 mm	28'10"	9010 mm	29'7"
3 Maximum Cutting Height	8940 mm	29'4"	8900 mm	29'2"
4 Maximum Loading Height	6270 mm	20'7"	6280 mm	20'7"
5 Minimum Loading Height	2290 mm	7'6"	1990 mm	6'6"
6 Maximum Depth Cut for 2440 mm (8'0") Level Bottom	5880 mm	19'3"	6170 mm	20'3"
7 Maximum Vertical Wall Digging Depth	4980 mm	16'4"	4960 mm	16'3"
8 Minimum Working Equipment Radius	2980 mm	9'9"	2940 mm	9'8"
Bucket Digging Force (ISO)	123 kN	27,650 lbf	123 kN	27,650 lbf
Stick Digging Force (ISO)	80 kN	17,980 lbf	75 kN	16,860 lbf
Bucket Type	GD		GD	
Bucket Capacity	1.00 m ³	1.31 yd ³	0.76 m ³	0.99 yd ³
Bucket Tip Radius	1300 mm	4'3"	1050 mm	3'5"

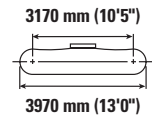
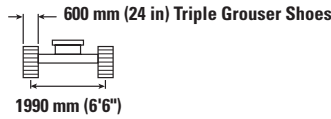
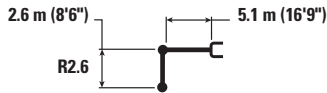
317 GC Hydraulic Excavator Specifications

Reach Boom Lift Capacities – Counterweight: 3.05 mt (6,720 lb) – without Bucket



		1500 mm/5'0"		3000 mm/10'0"		4500 mm/15'0"		6000 mm/20'0"		7500 mm/25'0"		mm ft/in		
7500 mm 25'0"	kg lb					*7700 *7,700						*3350 *7,450	*3350 *7,450	4770 15'1"
6000 mm 20'0"	kg lb							*3,600 *6,650	3,350 *6,650			*2,950 *6,450	*2,950 *6,450	6190 20'0"
4500 mm 15'0"	kg lb					*4650 *10,050	*4650 *10,050	*4300 *9,450	3300 7,050			*2850 *6,200	2550 5,600	7020 22'10"
3000 mm 10'0"	kg lb			*8900 *18,900	8750 *18,900	*5900 *12,700	4800 10,300	*4850 *10,500	3150 6,750			*2900 *6,300	2250 4,950	7450 24'4"
1500 mm 5'0"	kg lb					*7250 *15,600	4450 9,600	4850 10,400	3000 6,450	*3500 2200		*3050 *6,750	2150 4,700	7560 24'9"
0 mm 0	kg lb			*6200 *14,200	*6200 *14,200	7300 15,600	4250 9,150	4700 10,150	2900 6,200			*3450 *7,600	2200 4,800	7370 24'2"
-1500 mm -5'0"	kg lb	*5650 *12,650	*5650 *12,650	*10 050 *22,950	7650 16,450	7200 15,450	4200 9,000	4650 10,050	2850 6,100			3900 8,600	2400 5,300	6850 22'4"
-3000 mm -10'0"	kg lb	*9900 *22,300	*9900 *22,300	*10 750 *23,250	7800 16,750	7250 15,550	4250 9,100					4850 10,800	2950 6,600	5900 19'2"
-4500 mm -15'0"	kg lb			*7750 *16,400	*7750 *16,400							*5450 *11,900	4850 11,100	4240 13'6"

Reach Boom Lift Capacities – Counterweight: 3.05 mt (6,720 lb) – without Bucket



		1500 mm/5'0"		3000 mm/10'0"		4500 mm/15'0"		6000 mm/20'0"		7500 mm/25'0"		mm ft/in		
7500 mm 25'0"	kg lb					*7,700 *7,700						*3350 *7,450	*3350 *7,450	4770 15'1"
6000 mm 20'0"	kg lb							*3600 *6,650	3350 *6,650			*2950 *6,450	*2950 *6,450	6190 20'0"
4500 mm 15'0"	kg lb					*4650 *10,050	*4650 *10,050	*4300 *9,450	3300 7,100			*2850 *6,200	2550 5,700	7020 22'10"
3000 mm 10'0"	kg lb			*8900 *18,900	8850 *18,900	*5900 *12,700	4850 10,450	*4850 *10,500	3200 6,850			*2900 *6,300	2300 5,050	7450 24'4"
1500 mm 5'0"	kg lb					*7250 *15,600	4500 9,700	4900 10,550	3050 6,500	*3500 2200		*3050 *6,750	2200 4,800	7560 24'9"
0 mm 0	kg lb			*6200 *14,200	*6200 *14,200	7350 15,800	4300 9,250	4800 10,300	2900 6,300			*3450 *7,600	2200 4,850	7370 24'2"
-1500 mm -5'0"	kg lb	*5650 *12,650	*5650 *12,650	*10 050 *22,950	7750 16,650	7300 15,650	4250 9,100	4750 10,150	2900 6,200			3950 8,700	2450 5,350	6850 22'4"
-3000 mm -10'0"	kg lb	*9900 *22,300	*9900 *22,300	*10 750 *23,250	7900 16,950	7350 15,750	4300 9,200					4900 10,950	3000 6,650	5900 19'2"
-4500 mm -15'0"	kg lb			*7750 *16,400	*7750 *16,400							*5450 *11,900	4900 11,250	4240 13'6"



ISO 10567



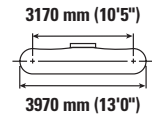
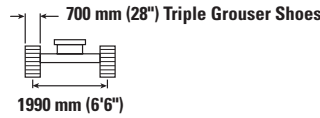
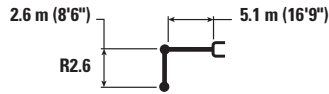
* Indicates that the load is limited by hydraulic lifting capacity rather than tipping load. The above loads are in compliance with hydraulic excavator lift capacity standard ISO 10567:2007. They do not exceed 87% of hydraulic lifting capacity or 75% of tipping load. Weight of all lifting accessories must be deducted from the above lifting capacities. Lifting capacities are based on the machine standing on a firm, uniform supporting surface. The use of a work tool attachment point to handle/lift objects, could affect the machine lift performance.

Lift capacity stays with ±5% for all available track shoes.

Always refer to the appropriate Operation and Maintenance Manual for specific product information.

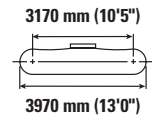
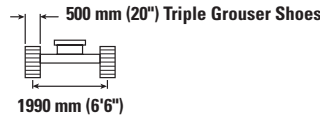
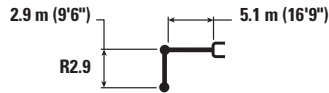
317 GC Hydraulic Excavator Specifications

Reach Boom Lift Capacities – Counterweight: 3.05 mt (6,720 lb) – without Bucket



Reach mm ft/in	kg lb	1500 mm/5'0"		3000 mm/10'0"		4500 mm/15'0"		6000 mm/20'0"		7500 mm/25'0"		mm ft/in		
7500 mm 25'0"	kg lb					*7,700	*7,700					*3350 *7,450	*3350 *7,450	4770 15'1"
6000 mm 20'0"	kg lb							*3600 *6,650	3400 *6,650			*2950 *6,450	*2950 *6,450	6190 20'0"
4500 mm 15'0"	kg lb					*4650 *10,050	*4650 *10,050	*4300 *9,450	3350 7,200			*2850 *6,200	2600 5,750	7020 22'10"
3000 mm 10'0"	kg lb			*8900 *18,900	*8900 *18,900	*5900 *12,700	4900 10,550	*4850 *10,500	3250 6,950			*2900 *6,300	2300 5,100	7450 24'4"
1500 mm 5'0"	kg lb					*7250 *15,600	4550 9,850	4950 10,700	3100 6,600	*3500	2250	*3050 *6,750	2200 4,850	7560 24'9"
0 mm 0	kg lb			*6200 *14,200	*6200 *14,200	7450 16,000	4350 9,400	4850 10,400	2950 6,350			*3450 *7,600	2250 4,950	7370 24'2"
-1500 mm -5'0"	kg lb	*5650 *12,650	*5650 *12,650	*10 050 *22,950	7850 16,850	7400 15,850	4300 9,250	4800 10,300	2900 6,250			4000 8,800	2450 5,400	6850 22'4"
-3000 mm -10'0"	kg lb	*9900 *22,300	*9900 *22,300	*10 750 *23,250	8000 17,150	7450 15,950	4350 9,350					5000 11,100	3050 6,750	5900 19'2"
-4500 mm -15'0"	kg lb			*7750 *16,400								*5450 *11,900	4950 11,350	4240 13'6"

Reach Boom Lift Capacities – Counterweight: 3.05 mt (6,720 lb) – without Bucket



Reach mm ft/in	kg lb	1500 mm/5'0"		3000 mm/10'0"		4500 mm/15'0"		6000 mm/20'0"		7500 mm/25'0"		mm ft/in		
7500 mm 25'0"	kg lb											*2950 *6,600	*2950 *6,600	5100 16'2"
6000 mm 20'0"	kg lb							*3650 *7,450	3350 7,150			*2650 *5,900	*2650 *5,900	6450 20'11"
4500 mm 15'0"	kg lb							*4050 *8,850	3300 7,050			*2600 *5,700	2400 5,350	7240 23'7"
3000 mm 10'0"	kg lb			*8000 *17,050	*8000 *17,050	*5550 *11,950	4800 10,400	*4600 *10,000	3150 6,750	*3350 *6,200	2250 4,750	*2700 *5,850	2150 4,700	7660 25'1"
1500 mm 5'0"	kg lb			*6950 *16,650	*6950 *16,650	*6950 *14,950	4450 9,600	4850 10,400	3000 6,400	3450 7,450	2150 4,600	*2900 *6,300	2050 4,500	7780 25'5"
0 mm 0	kg lb			*6950 *15,950	*6950 *15,950	7250 15,550	4250 9,100	4700 10,100	2850 6,150	3400	2100	*3250 *7,150	2050 4,550	7590 24'10"
-1500 mm -5'0"	kg lb	*5650 *12,550	*5650 *12,550	*10 000 *22,750	7550 16,250	7150 15,350	4150 8,900	4650 9,950	2800 6,000			3700 8,100	2250 4,950	7080 23'2"
-3000 mm -10'0"	kg lb	*9250 *20,750	*9250 *20,750	*11 150 *24,050	7700 16,450	7150 15,400	4150 8,950	4650 10,050	2850 6,100			4500 10,000	2750 6,050	6160 20'1"
-4500 mm -15'0"	kg lb			*8550 *18,200	7950 17,100	*5750	4350					*5550 *12,200	4200 9,550	4610 14'9"



ISO 10567



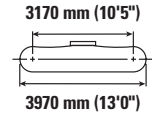
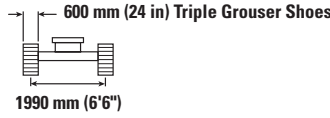
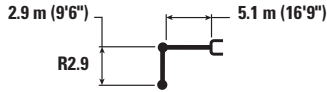
* Indicates that the load is limited by hydraulic lifting capacity rather than tipping load. The above loads are in compliance with hydraulic excavator lift capacity standard ISO 10567:2007. They do not exceed 87% of hydraulic lifting capacity or 75% of tipping load. Weight of all lifting accessories must be deducted from the above lifting capacities. Lifting capacities are based on the machine standing on a firm, uniform supporting surface. The use of a work tool attachment point to handle/lift objects, could affect the machine lift performance.

Lift capacity stays with ±5% for all available track shoes.

Always refer to the appropriate Operation and Maintenance Manual for specific product information.

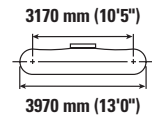
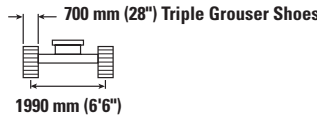
317 GC Hydraulic Excavator Specifications

Reach Boom Lift Capacities – Counterweight: 3.05 mt (6,720 lb) – without Bucket



		1500 mm/5'0"		3000 mm/10'0"		4500 mm/15'0"		6000 mm/20'0"		7500 mm/25'0"		mm ft/in		
7500 mm 25'0"	kg lb											*2950 *6,600	*2950 *6,600	5100 16'2"
6000 mm 20'0"	kg lb							*3650 *7,450	3400 7,250			*2650 *5,900	*2650 *5,900	6450 20'11"
4500 mm 15'0"	kg lb							*4050 *8,850	3350 7,150			*2600 *5,700	2450 5,400	7240 23'7"
3000 mm 10'0"	kg lb			*8000 *17,050	*8000 *17,050	*5550 *11,950	4900 10,500	*4600 *10,000	3200 6,850	*3350 *6,200	2250 4,800	*2700 *5,850	2200 4,800	7660 25'1"
1500 mm 5'0"	kg lb			*6950 *16,650	*6950 *16,650	*6950 *14,950	4500 9,750	4900 10,550	3000 6,500	3500 7,550	2200 4,700	*2900 *6,300	2050 4,550	7780 25'5"
0 mm 0	kg lb			*6950 *15,950	*6950 *15,950	7350 15,750	4300 9,200	4750 10,200	2900 6,200	3450	2150	*3250 *7,150	2100 4,600	7590 24'10"
-1500 mm -5'0"	kg lb	*5650 *12,550	*5650 *12,550	*10 000 *22,750	7650 16,450	7250 15,500	4200 9,000	4700 10,100	2850 6,100			3750 8,200	2300 5,000	7080 23'2"
-3000 mm -10'0"	kg lb	*9250 *20,750	*9250 *20,750	*11 150 *24,050	7750 16,700	7250 15,600	4200 9,050	4700 10,150	2850 6,150			4550 10,100	2750 6,150	6160 20'1"
-4500 mm -15'0"	kg lb			*8550 *18,200	8050 17,300	*5750	4400					*5550 *12,200	4250 9,700	4610 14'9"

Reach Boom Lift Capacities – Counterweight: 3.05 mt (6,720 lb) – without Bucket



		1500 mm/5'0"		3000 mm/10'0"		4500 mm/15'0"		6000 mm/20'0"		7500 mm/25'0"		mm ft/in		
7500 mm 25'0"	kg lb											*2950 *6,600	*2950 *6,600	5100 16'2"
6000 mm 20'0"	kg lb							*3650 *7,450	3450 7,350			*2650 *5,900	*2650 *5,900	6450 20'11"
4500 mm 15'0"	kg lb							*4050 *8,850	3350 7,200			*2600 *5,700	2450 5,450	7240 23'7"
3000 mm 10'0"	kg lb			*8000 *17,050	*8000 *17,050	*5550 *11,950	4950 10,600	*4600 *10,000	3250 6,950	*3350 *6,200	2300 4,900	*2700 *5,850	2200 4,850	7660 25'1"
1500 mm 5'0"	kg lb			*6950 *16,650	*6950 *16,650	*6950 *14,950	4600 9,850	4950 10,650	3050 6,600	3550 7,650	2200 4,750	*2900 *6,300	2100 4,600	7780 25'5"
0 mm 0	kg lb			*6950 *15,950	*6950 *15,950	7450 16,000	4350 9,350	4800 10,350	2950 6,300	3500	2150	*3250 *7,150	2150 4,650	7590 24'10"
-1500 mm -5'0"	kg lb	*5650 *12,550	*5650 *12,550	*10 000 *22,750	7750 16,650	7350 15,750	4250 9,100	4750 10,200	2850 6,150			3800 8,300	2300 5,100	7080 23'2"
-3000 mm -10'0"	kg lb	*9250 *20,750	*9250 *20,750	*11 150 *24,050	7850 16,900	7350 15,800	4250 9,200	4800 10,300	2900 6,250			4600 10,250	2800 6,200	6160 20'1"
-4500 mm -15'0"	kg lb			*8550 *18,200	8150 17,500	*5750	4450					*5550 *12,200	4300 9,800	4610 14'9"



ISO 10567



* Indicates that the load is limited by hydraulic lifting capacity rather than tipping load. The above loads are in compliance with hydraulic excavator lift capacity standard ISO 10567:2007. They do not exceed 87% of hydraulic lifting capacity or 75% of tipping load. Weight of all lifting accessories must be deducted from the above lifting capacities. Lifting capacities are based on the machine standing on a firm, uniform supporting surface. The use of a work tool attachment point to handle/lift objects, could affect the machine lift performance.

Lift capacity stays with ±5% for all available track shoes.

Always refer to the appropriate Operation and Maintenance Manual for specific product information.

317 GC Hydraulic Excavator Specifications

Bucket Specifications and Compatibility

	Linkage	Width		Capacity		Weight		Fill %	Reach Boom		
		mm	in	m ³	yd ³	kg	lb		R2.6 (8'6")	R2.9 m (9'6")	
Pin-On (No Quick Coupler)											
General Duty	316	600	24	0.35	0.46	440	969	100	●	●	
	316	900	36	0.62	0.81	546	1,203	100	●	●	
	316	1200	48	0.91	1.19	658	1,450	100	⊖	⊖	
	316	1300	51	1.00	1.31	695	1,532	100	⊖	○	
Ditch Cleaning	316	2000	78	0.94	1.23	723	1,594	100	⊖	⊖	
Ditch Cleaning – Tilt	316	2000	79	0.86	1.12	1028	2,266	100	○	○	
Maximum load with pin-on (payload + bucket)								kg	2200	2080	
								lb	4,842	4,583	
With Cat Pin Grabber Coupler											
General Duty	316	600	24	0.35	0.46	440	969	100	●	●	
	316	900	36	0.62	0.81	546	1,203	100	●	●	
	316	1200	48	0.91	1.19	658	1,450	100	○	○	
	316	1300	51	1.00	1.31	695	1,532	100	○	○	
Ditch Cleaning	316	2000	78	0.94	1.23	723	1,594	100	○	○	
Ditch Cleaning – Tilt	316	2000	79	0.86	1.12	1028	2,266	100	◇	◇	
Maximum load with coupler (payload + bucket)								kg	1896	1879	
								lb	4,180	4,142	

The above loads are in compliance with hydraulic excavator standard EN474-5:2006+A3:2013, they do not exceed 87% of hydraulic lifting capacity or 75% of tipping capacity with front linkage fully extended at ground line with bucket curled.
Capacity based on ISO 7451:2007.

Maximum Material Density:

- 2100 kg/m³ (3,500 lb/yd³)
- ⊖ 1500 kg/m³ (2,500 lb/yd³)
- 1200 kg/m³ (2,000 lb/yd³)
- ◇ 900 kg/m³ (1,500 lb/yd³)

Caterpillar recommends using appropriate work tools to maximize the value customers receive from our products. Use of work tools, including buckets, which are outside of Caterpillar's recommendations or specifications for weight, dimensions, flows, pressures, etc. may result in less-than-optimal performance, including but not limited to reductions in production, stability, reliability, and component durability. Improper use of a work tool resulting in sweeping, prying, twisting and/or catching of heavy loads will reduce the life of the boom and stick.

(continued on next page)

317 GC Hydraulic Excavator Specifications

Bucket Specifications and Compatibility (continued)

	Linkage	Width		Capacity		Weight		Fill %	Reach Boom	
		mm	in	m ³	yd ³	kg	lb		R2.6 (8'6")	R2.9 m (9'6")
With CW30 Coupler										
General Duty	316	600	24	0.35	0.46	439	967	100	●	●
	316	750	30	0.49	0.64	475	1,047	100	●	●
	316	900	36	0.62	0.81	534	1,177	100	●	●
	316	1100	43	0.80	1.04	593	1,307	100	⊙	⊖
	316	1200	48	0.90	1.18	646	1,423	100	⊖	○
	316	1300	51	1.00	1.31	677	1,492	100	○	○
Heavy Duty	316	1300	51	1.00	1.31	694	1,529	100	○	○
General Duty – Leveling Edge	316	996	39.2	0.70	0.93	586	1,291	100	⊙	⊙
	316	1200	47	0.91	1.19	672	1,481	100	⊖	○
	316	690	27	0.47	0.61	476	1,049	100	●	●
	316	790	31	0.56	0.73	509	1,122	100	●	●
	316	1400	55	1.09	1.43	738	1,626	100	◇	◇
Ditch Cleaning	316	1800	72	1.10	1.44	646	1,423	100	○	◇
	316	1800	72	1.24	1.62	678	1,496	100	◇	◇
	316	2100	82	1.45	1.90	760	1,675	100	X	X
Ditch Cleaning – Tilt	316	1800	72	0.78	1.02	1048	2,310	100	○	◇
	316	2000	79	0.86	1.13	1111	2,449	100	◇	◇
Maximum load with coupler (payload + bucket)								kg	1978	1861
								lb	4,361	4,102
With CW30S Coupler										
General Duty	316	600	24	0.35	0.46	423	932	100	●	●
	316	750	30	0.49	0.64	471	1,038	100	●	●
	316	900	36	0.62	0.81	534	1,177	100	●	●
	316	1100	43	0.80	1.04	593	1,307	100	⊙	⊖
	316	1200	48	0.91	1.18	646	1,423	100	⊖	○
	316	1300	51	1.00	1.31	677	1,492	100	○	○
	316	1400	55	1.09	1.43	707	1,558	100	○	◇
Heavy Duty	316	1200	48	0.91	1.18	663	1,461	100	⊖	○
	316	1300	51	1.00	1.31	695	1,531	100	○	○
Ditch Cleaning – Tilt	316	2000	79	0.86	1.13	1092	2,407	100	◇	◇
Maximum load with coupler (payload + bucket)								kg	2013	1896
								lb	4,438	4,179

The above loads are in compliance with hydraulic excavator standard EN474-5:2006+A3:2013, they do not exceed 87% of hydraulic lifting capacity or 75% of tipping capacity with front linkage fully extended at ground line with bucket curled.

Capacity based on ISO 7451:2007.

Maximum Material Density:

- 2100 kg/m³ (3,500 lb/yd³)
- ⊙ 1800 kg/m³ (3,000 lb/yd³)
- ⊖ 1500 kg/m³ (2,500 lb/yd³)
- 1200 kg/m³ (2,000 lb/yd³)
- ◇ 900 kg/m³ (1,500 lb/yd³)
- X Not Recommended

Caterpillar recommends using appropriate work tools to maximize the value customers receive from our products. Use of work tools, including buckets, which are outside of Caterpillar's recommendations or specifications for weight, dimensions, flows, pressures, etc. may result in less-than-optimal performance, including but not limited to reductions in production, stability, reliability, and component durability. Improper use of a work tool resulting in sweeping, prying, twisting and/or catching of heavy loads will reduce the life of the boom and stick.

317 GC Hydraulic Excavator Specifications

Attachments Offering Guide

Not all Attachments are available in all regions. Consult your Cat dealer for configurations available in your region.

Match
 * Working range front only
 No Match
 1800 kg/m³ (3,000 lb/yd³)
 1200 kg/m³ (2,000 lb/yd³)

PIN-ON ATTACHMENTS

Boom Type	Stick Length	Reach Boom	
		R2.6 (8'6")	R2.9 (9'6")
Hydraulic Hammers	H110 S	✓	✓
	H115 GC S	✓	✓
	H115 S	✓	✓
	H120 S	✓	✓
Demolition and Sorting Grapples	G313 GC	✓	✓
	G314	✓	✓
	G317 GC	✓	✓*
Mobile Scrap and Demolition Shears	S3015	✓	✓
	S3015 Flat Top	✓	✓
Compactors (Vibratory Plate)	CVP75	✓	✓
Orange Peel Grapples	GSH420-500	●	○
	GSH420-600	○	○
	GSH420-750	○	
	GSH520-500	○	○
	GSH520-600	○	
	GSV520 GC-400	●	●
	GSV520 GC-500	●	○
	GSV520 GC-600	○	○
	GSV520-400	●	●
	GSV520-500	○	○
	GSV520-600	○	○

(continued on next page)

317 GC Hydraulic Excavator Specifications

Attachments Offering Guide *(continued)*

Not all Attachments are available in all regions. Consult your Cat dealer for configurations available in your region.

Match * Working range front only No Match

CAT PIN GRABBER COUPLER ATTACHMENTS

Boom Type	Stick Length	Reach Boom	
		R2.6 (8'6")	R2.9 (9'6")
Hydraulic Hammers	H110 S	✓	✓
	H115 GC S	✓	✓
	H115 S	✓	✓
	H120 S	✓	✓*
Demolition and Sorting Grapples	G313 GC	✓	✓
	G314	✓	✓*
Mobile Scrap and Demolition Shears	S3015	✓	✓
	S3015 Flat Top	✓	✓*
Compactors (Vibratory Plate)	CVP75	✓	✓

CW-30S DEDICATED COUPLER ATTACHMENTS

Boom Type	Stick Length	Reach Boom	
		R2.6 (8'6")	R2.9 (9'6")
Hydraulic Hammers	H110 S	✓	✓
	H115 GC S	✓	✓
	H115 S	✓	✓
	H120 S	✓	✓
Demolition and Sorting Grapples	G313 GC	✓	✓
	G314	✓	✓
	G317 GC	✓*	
	S3015	✓	✓
	S3015 Flat Top	✓	✓
Compactors (Vibratory Plate)	CVP75	✓	✓

(continued on next page)

317 GC Hydraulic Excavator Specifications

Attachments Offering Guide *(continued)*

Not all Attachments are available in all regions. Consult your Cat dealer for configurations available in your region.

Match * Working range front only No Match

CW-30 DEDICATED COUPLER ATTACHMENTS

Boom Type	Stick Length	Reach Boom	
		R2.6 (8'6")	R2.9 (9'6")
Hydraulic Hammers	H110 S	✓	✓
	H115 GC S	✓	✓
	H115 S	✓	✓
	H120 S	✓	✓*
Demolition and Sorting Grapples	G313 GC	✓	✓
	G313 GC fixed CAN	✓	✓
	G314	✓	✓
	G317 GC	✓*	
	G317 GC fixed CAN	✓*	
Mobile Scrap and Demolition Shears	S3015	✓	✓
	S3015 Flat Top	✓	✓
Compactors (Vibratory Plate)	CVP75	✓	✓

S60 DEDICATED COUPLER ATTACHMENTS

Boom Type	Stick Length	Reach Boom	
		R2.6 (8'6")	R2.9 (9'6")
Hydraulic Hammers	H110 S	✓	✓
	H115 GC S	✓	✓
	H115 S	✓	✓
	H120 S	✓	✓
Demolition and Sorting Grapples	G313 GC	✓	✓
	G314	✓	✓
	G317 GC	✓*	
Mobile Scrap and Demolition Shears	S3015 Flat Top	✓	✓
Compactors (Vibratory Plate)	CVP75	✓	✓

(continued on next page)

317 GC Hydraulic Excavator Specifications

Attachments Offering Guide *(continued)*

Not all Attachments are available in all regions. Consult your Cat dealer for configurations available in your region.

Match

* Working range front only

HCS60 DEDICATED COUPLER ATTACHMENTS

Boom Type	Stick Length	Reach Boom	
		R2.6 (8'6")	R2.9 (9'6")
Hydraulic Hammers	H110 S	✓	✓
	H115 S	✓	✓
	H120 S	✓	✓
Demolition and Sorting Grapples	G313 GC	✓	✓
	G314	✓	✓
Mobile Scrap and Demolition Shears	S3015 Flat Top	✓	✓
Compactors (Vibratory Plate)	CVP75	✓	✓

HCS65 DEDICATED COUPLER ATTACHMENTS

Boom Type	Stick Length	Reach Boom	
		R2.6 (8'6")	R2.9 (9'6")
Hydraulic Hammers	H110 S	✓	✓
	H115 S	✓	✓
	H120 S	✓	✓*
Demolition and Sorting Grapples	G313 GC	✓	✓
	G314	✓	✓*
Mobile Scrap and Demolition Shears	S3015 Flat Top	✓	✓*
Compactors (Vibratory Plate)	CVP75	✓	✓

BOOM-MOUNT ATTACHMENTS

Boom Type	Stick Length	Reach Boom
Mobile Scrap and Demolition Shears	S3035	✓
	S3035 Flat Top	✓*

Standard and Optional Equipment

Standard and optional equipment may vary. Consult your Cat dealer for details.

	Standard	Optional		Standard	Optional
BOOMS, STICKS AND LINKAGES			CAT TECHNOLOGY		
5.1 m (16'9") Reach boom	✓		Cat Product Link™	✓	
2.6 m (8'6") Reach stick		✓	Remote Flash and Troubleshoot	✓	
2.9 m (9'6") Reach stick		✓	Auto hammer stop	✓	
Bucket linkage, with lifting eye	✓		ELECTRICAL SYSTEM		
CAB			Maintenance free battery	✓	
Sound suppressed ROPS cab with viscous mounts	✓		Centralized electrical disconnect switch	✓	
High-resolution 203 mm (8") LCD touchscreen monitor	✓		Programmable time-delay LED working lights	✓	
Automatic bi-level air conditioner	✓		LED chassis and left-side boom light – 1,800 lumens	✓	
Jog dial and shortcut keys for monitor control	✓		LED right-side boom light and cab lights – 1,800 lumens		✓
Keyless push-to-start engine control	✓		ENGINE		
Height-adjustable console, three steps with tool	✓		Cat C3.6 Stage V diesel engine	✓	
Fixed left-side console	✓		Two selectable modes: Power, Smart	✓	
Mechanically adjustable seat suspension	✓		One-touch low idle with automatic engine speed control	✓	
51 mm (2") orange seat belt	✓		Automatic engine shutdown	✓	
Bluetooth® integrated radio with USB port	✓		–18° C (–0° F) cold start capability		✓
2 × 12V DC outlets	✓		–25° C (–13° F) cold start capability		✓
Console storage	✓		Single fuel filtration system with water separator and indicator	✓	
Cup and bottle holders	✓		Sealed double element air filter with integrated pre-cleaner	✓	
Openable two-piece front window	✓		Electric fuel priming pump	✓	
Upper radial wiper with washer	✓		Electric cooling fans	✓	
Openable steel hatch	✓		Biodiesel capability up to B20	✓	
LED dome light	✓				
Roller rear sunscreen		✓			
Rear window emergency exit	✓				
Washable floor mat	✓				
Beacon ready	✓				

(continued on next page)

317 GC Standard and Optional Equipment

Standard and Optional Equipment *(continued)*

Standard and optional equipment may vary. Consult your Cat dealer for details.

	Standard	Optional		Standard	Optional
HYDRAULIC SYSTEM			SERVICE AND MAINTENANCE		
Electronic main control valve	✓		Side entry to service platform	✓	
Single type electronic main pump	✓		Grouped engine oil and fuel filters	✓	
Boom and stick regeneration circuits	✓		Ground-level engine oil dipstick	✓	
Boom and stick drift reduction valve	✓		S-O-S SM sampling ports	✓	
Boom lowering check valve	✓		UNDERCARRIAGE AND STRUCTURES		
Stick lowering check valve	✓		500 mm (20") triple grouser track shoes		✓
Automatic hydraulic oil warm up	✓		600 mm (24") triple grouser track shoes		✓
Automatic two-speed travel	✓		700 mm (28") triple grouser track shoes with additional steps		✓
Element type main hydraulic filter	✓		Grease lubricated track link	✓	
Quick coupler circuit for Cat pin grabber		✓	Center track guiding guards	✓	
Quick coupler circuit for CW dedicated		✓	Bottom guards	✓	
SAFETY AND SECURITY			Travel motor guards	✓	
Rear and right-side-view cameras	✓		3.05 mt (6,720 lb) counterweight		✓
Ground-level accessible secondary engine shutoff switch in cab	✓		Tie-down points at base frame (ISO 15818 compliant)	✓	
Service platform with anti-skid plate and countersunk bolts	✓				
Signaling/warning horn	✓				
Hydraulic lock out lever	✓				

Dealer Installed Kits and Attachments

Attachments may vary. Consult your Cat dealer for details.

CAB

- Radial lower wiper
- Left-hand and right-hand electrical pedal (two-way) for tool control
- Dual exit rear window kit
- Rain protector plus cab light cover
- Polycarbonate roof hatch
- Front windshield laminated glass (P5A glass, EU demolition regulation)
- Key fob (for use with Bluetooth receiver)

SAFETY AND SECURITY

- 76 mm (3") retractable seat belt
- Bluetooth receiver

GUARDS

- FOGS (not compatible with cab light cover, rain protector)
- Mesh guard full front (not compatible with cab light cover, rain protector)
- Mesh guard lower front half
- Full protecting vandalism guard

For more complete information on Cat products, dealer services, and industry solutions, visit us on the web at www.cat.com

© 2021 Caterpillar
All rights reserved

Materials and specifications are subject to change without notice. Featured machines in photos may include additional equipment. See your Cat dealer for available options.

CAT, CATERPILLAR, LET'S DO THE WORK, their respective logos, "Caterpillar Corporate Yellow," the "Power Edge" and Cat "Modern Hex" trade dress as well as corporate and product identity used herein, are trademarks of Caterpillar and may not be used without permission.

AEXQ3020-01 (11-2021)
Replaces AEXQ3020
Build Number: 07B
(Europe)

