

**Sound Attenuated  
Diesel Engine Driven  
Environmental Silent Pump**



VARIOUS PATENTS APPLY

**Priming Assisted Centrifugal Pump  
w/Autostart  
Model PA6D60C-C2.2TA FT4 ESP  
Size 6" x 6"**



Total Head		Capacity of Pump in U.S. Gallons per Minute (GPM) at Continuous Performance				
P.S.I.	Feet					
45.5	106	550	550	550	550	550
43.3	100	740	740	740	740	740
34.7	80	880	1245	1360	1360	1360
26.0	60	885	1275	1550	1780	1920
17.3	40	900	1285	1560	1780	1920
8.7	20	910	1300	1570	1810	1920
<b>Suction Lift</b>		<b>25'</b>	<b>20'</b>	<b>15'</b>	<b>10'</b>	<b>5'</b>

PHOTO NOT AVAILABLE AT TIME OF PUBLISHING

**PUMP SPECIFICATIONS**

- Size:** 6 x 6" (152 mm x 152 mm) Flanged.
- Casing:** Gray Iron 30.  
Maximum Operating Pressure 77 psi (531 kPa).\*
- Enclosed Type, Two Vane Impeller:** Ductile Iron 65-45-12.  
Handles 3" (76,2 mm) Diameter Spherical Solids.
- Impeller Shaft:** Stainless Steel 17-4 PH.
- Externally Adjustable Wear Plate:** Alloy Steel AR-400.
- Bearing Housing:** Gray Iron 30.
- Seal Plate:** Gray Iron 30.
- Seal:** Mechanical, Oil-Lubricated. Silicon Carbide Rotating Face. Silicon Carbide Stationary Seat. Fluorocarbon Elastomers (DuPont Viton® or Equivalent). Stainless Steel 18-8 Cage and Spring. Maximum Temperature of Liquid Pumped, 160°F (71°C).\*
- Shaft Sleeve:** Stainless Steel 17-4 PH.
- Priming Chamber:** Gray Iron 30 Housing w/Stainless Steel Float and Linkage.
- Discharge Check Valve:** Ductile Iron Housing w/Buna-N Flapper.
- Radial/Thrust Bearings:** Open Double Row Ball.
- Bearing and Seal Cavity Lubrication:** SAE 30 Non-Detergent Oil.
- Gaskets:** Vegetable Fiber, and Compressed Synthetic Fibers.
- O-Rings:** Fluorocarbon and Buna-N.
- Hardware:** Standard Plated Steel.
- Bearing and Seal Cavity Oil Level Sight Gauges.**
- \*Consult Factory for Applications Exceeding Maximum Pressure and/or Temperature Indicated.*
- Standard Equipment:** Belt-Driven Air Compressor. Hoisting Bail. Sound-proof (EPA Average (74) dBA at 23 feet [7 meters] Under Load) Lightweight Aluminum Enclosure - Removable for Maintenance of Pump or Engine - w/Lockable Door Panels. Combination Skid Base w/Fuel Tank. [Full Feature Control Panel](#). [Single Ball Type Float Switch](#).\*\*
- Optional Equipment:** Battery. NPT Suction and Discharge Flange Kits, High Speed (55 MPH/89 KM/H) Single Axle Pneumatic-Tired Wheel Kit w/wo DOT-Approved Lights and Electric Brakes. [Tandem Axle Over-the-Road Trailer](#) (Meets DOT Requirements). Liquid Level Transducer.
- \*\*50 Ft. (15 m) Standard Length; Dual Switches and Alternate Cable Lengths Available From the Factory.*

WARNING!

Do not use in explosive atmosphere or for pumping volatile flammable liquids.

**ENGINE SPECIFICATIONS**

- Model:** Caterpillar C2.2TA.
- EPA Tier:** Final Tier 4.
- Type:** Turbocharged, Aftercooled Four Cylinder, Diesel Engine.
- Displacement:** 134 Cu. In. (2,2 Liters).
- Lubrication:** Forced Circulation.
- Air Cleaner:** Dry Type.
- Fuel Tank:** 102 U.S. Gals. (386 Liters).
- Full Load Operating Time:** 32 Hrs.
- Starter:** 12V Electric.
- Standard Features:** Muffler w/Guard and Weather Cap, DOC Exhaust After Treatment System.
- Engine Control Features:** Padlockable Box with Throttle Control, Tachometer, Coolant Temperature, Oil Pressure, Voltage and Overstart Indicators/Shutdowns. Manual/Stop/Auto Keyswitch. Audible Startup Warning Delay. Electronic Fuel Level Sensor. Fuel Level Display/Alarm/Shutdown.

**CATERPILLAR PUBLISHED PERFORMANCE:**

Maximum Gross BHP (Intermittent)  
67 (50.0 kW) @ 2800 RPM



**GORMAN-RUPP PUMPS**

www.grpumps.com

Specifications Subject to Change Without Notice

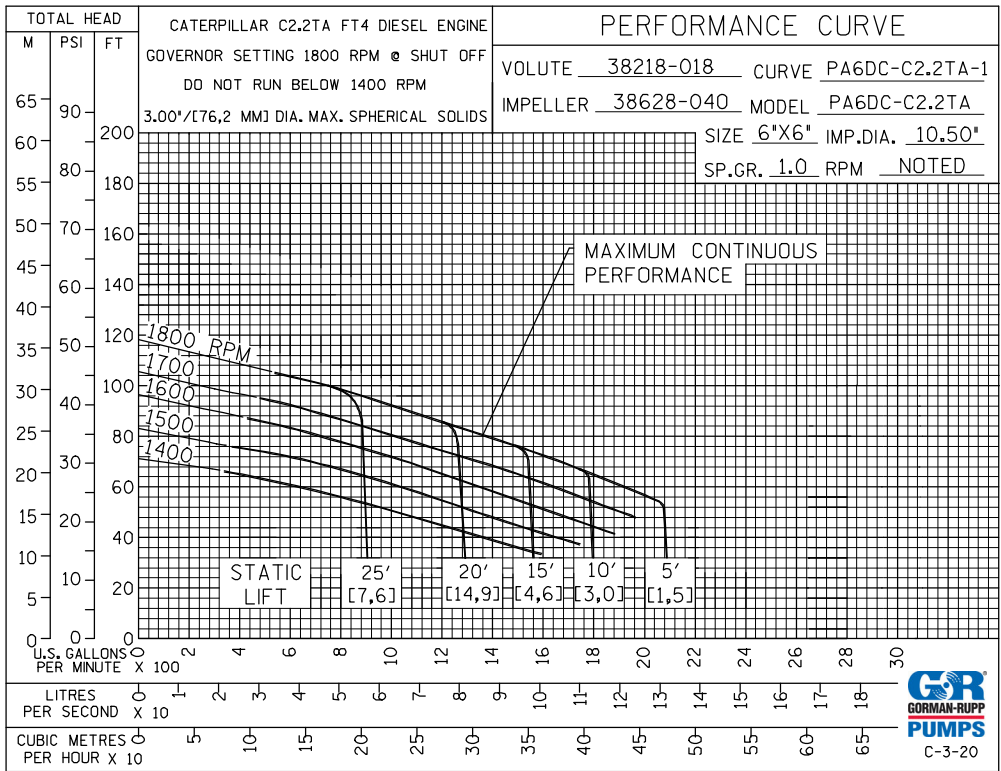
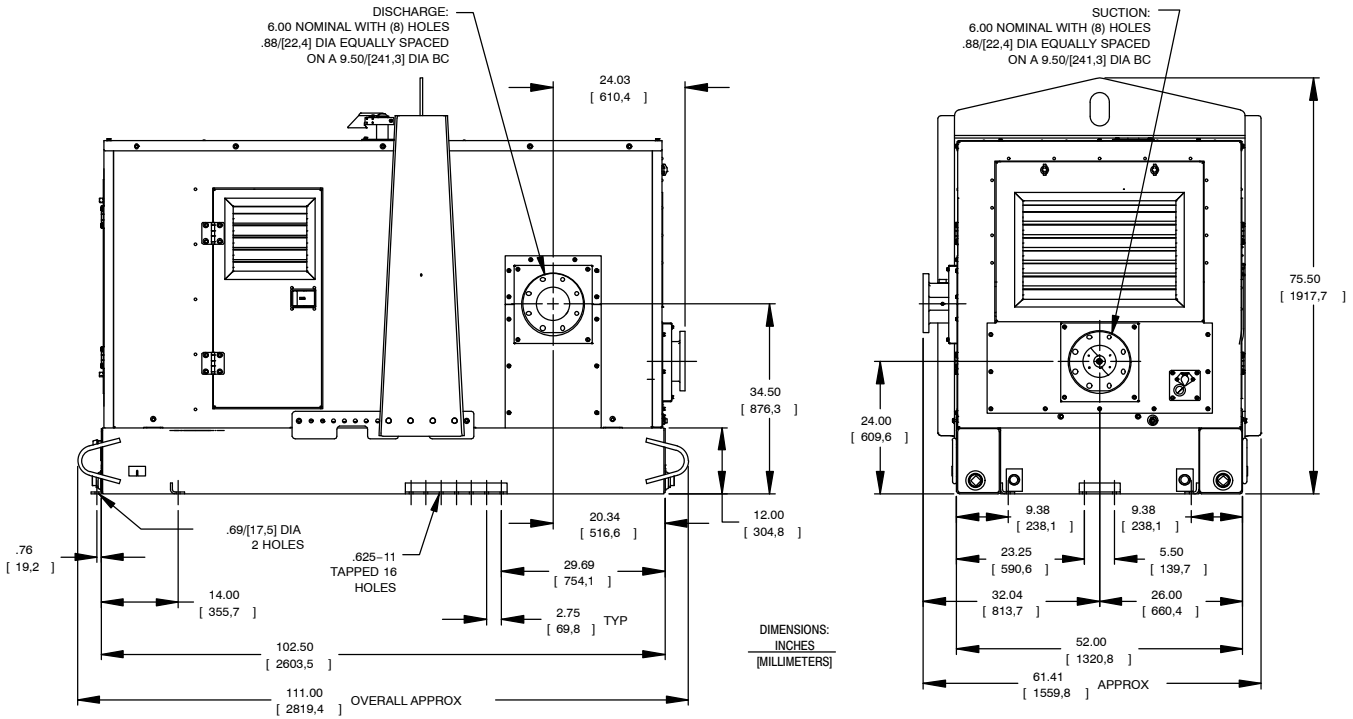
Printed in U.S.A.

**Specification Data**

**SECTION 42, PAGE 1116**

APPROXIMATE  
DIMENSIONS and WEIGHTS

**NET WEIGHT: 4240 LBS. (1923 KG.)**  
**SHIPPING WEIGHT: 4530 LBS. (2055 KG.)**  
**EXPORT CRATE SIZE: 330 CU. FT. (9,3CU. M.)**



**GORMAN-RUPP PUMPS**

www.grpumps.com

Specifications Subject to Change Without Notice

Printed in U.S.A.